

CANTON
HPOLE
& RYE



Brochure & Price Guide
2023



Catchpole and Rye Our Heritage

To create something truly original,
you must first fully understand the past.

At Catchpole & Rye, we are committed to
British manufacturing.

We design all our products in-house and
manufacture and finish the majority of these in
our own Workshops in rural Kent - a claim few
bathroom brands can make.

Where possible, we source products which we
cannot manufacture ourselves – like pottery and
ceramics – from local British companies.

We are a family owned and operated business,
and we endeavour to support other businesses
like ours where we can.

For our full collection of luxurious products,
please visit catchpoleandrye.com

A foundry worker in full protective gear, including a helmet and face shield, is pouring molten metal into a mold. The scene is illuminated by the bright orange glow of the molten metal, creating a dramatic and industrial atmosphere. The worker is positioned on the left side of the frame, leaning over the mold. The mold is a large, cylindrical structure with a complex internal design. The background shows various industrial components and machinery, including a large wheel and a metal frame. The overall scene captures the intense and skilled nature of the foundry work.

The Foundry - Kent, England

It takes skills handed down through generations to give us the ability to cast all our baths here in Kent.

First, the raw iron is heated to 1,100°C. When cooled, these moulds are “struck” and the basic casting is revealed.

A series of processes including blasting and fettling are completed before each bath can be prepared for enamelling.



Manufacturing

At Catchpole & Rye, we design and manufacture our own products - something few bathroom brands can claim - with everything from the design studio to the foundry based at our headquarters in rural Kent.

This in-house capability means we can respond to our customer's individual needs, specialising in creative solutions to help achieve a genuinely bespoke service.

In fact, many of our favourite pieces were created this way. It's British manufacturing at its very best, and it's what makes us unique, ensuring customers receive the excellent quality of service and product they deserve.

The Polishing Shop

The Polishing Workshop is at the heart of our manufacturing operation. All of our brassware, aluminium and cast-iron products, and our Copper and Nickel baths, will pass through the polishing shop at the same stage.

Ian, our most experienced metal polisher, has more than 40 year's experience and his expertise in this field gives us a superior edge when it comes to producing the best finish possible.

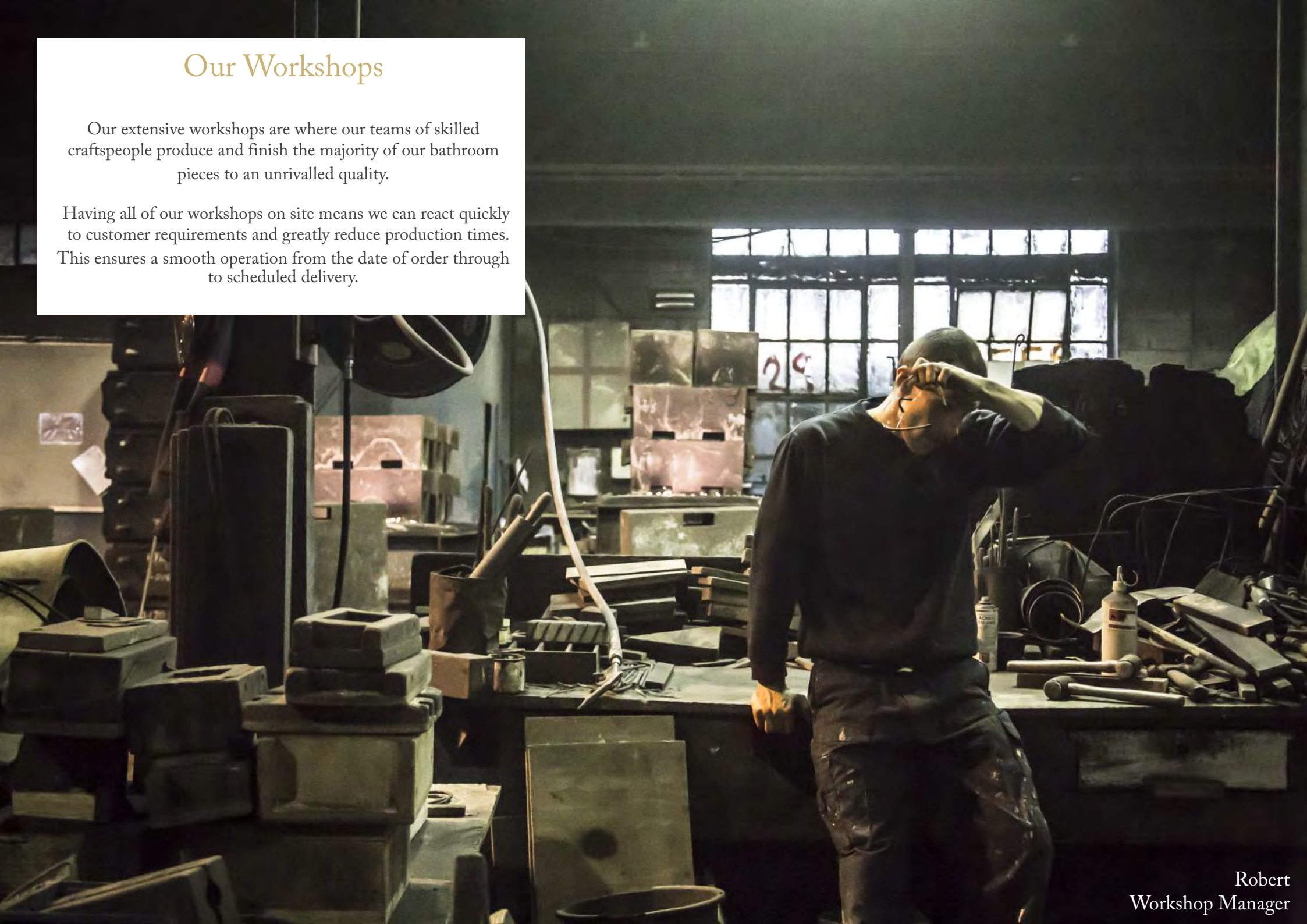


Ian
Polisher - 40 Years experience

Our Workshops

Our extensive workshops are where our teams of skilled craftspeople produce and finish the majority of our bathroom pieces to an unrivalled quality.

Having all of our workshops on site means we can react quickly to customer requirements and greatly reduce production times. This ensures a smooth operation from the date of order through to scheduled delivery.





Metal Finishes

All of our brassware products, such as taps, showers and towel rails, head to the electroplating workshop. We achieve a spectrum of metal finishes from Black and Silver Nickel through to Polished Copper and Aged Brass.

Like many of our in-house skills, it gives us the ability to achieve a specific depth of finish, or to match other brassware being used within a project, in order to meet the customer's individual requirements.

Engineering

We continuously challenge conventional manufacturing concepts and we devise innovative engineering solutions. This means we can create the pieces our customers want. Our Mercantile Towel Rails are just one example of how we work at the cutting edge of design innovation.

These stylish rails have no welded joints - instead, the joints are made from a solid bar, which has a much higher density and consistency than cast brass.



INSPIRATION

At Catchpole & Rye we have a wealth of experience working with residential and commercial clients all over the world.

We happily work alongside designers, specifiers and architects, in the United Kingdom and overseas.

The following Case Studies are a selection of our favourite contracts and collaborations.

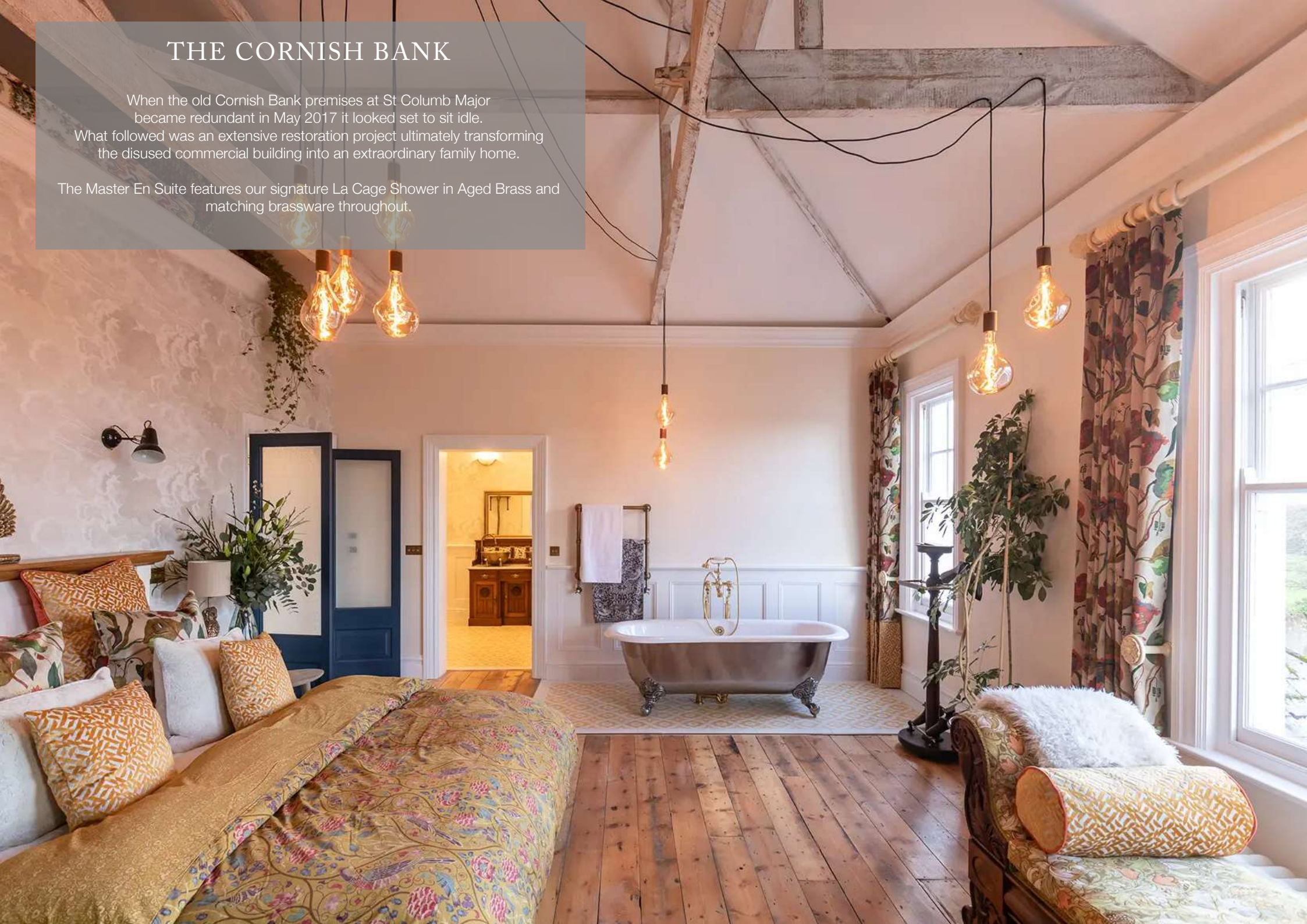
Maybe these will provide you with inspiration for future projects.



THE CORNISH BANK

When the old Cornish Bank premises at St Columb Major became redundant in May 2017 it looked set to sit idle. What followed was an extensive restoration project ultimately transforming the disused commercial building into an extraordinary family home.

The Master En Suite features our signature La Cage Shower in Aged Brass and matching brassware throughout.





TURKISH OTTOMAN VILLA

Built in 1880 for a wealthy Maronite Christian Merchant, this splendid Turkish Ottoman building was the former Italian Embassy. The ambassador added Italian influences, transforming the building into a small Palazzo. The client, who studied history of art and has a passion for restoring historical buildings, first came to Catchpole and Rye, inspired by our La Cage shower and association with designing classical pieces. Taking two years to complete, it now serves as an atmospheric and charming home for its new owner.

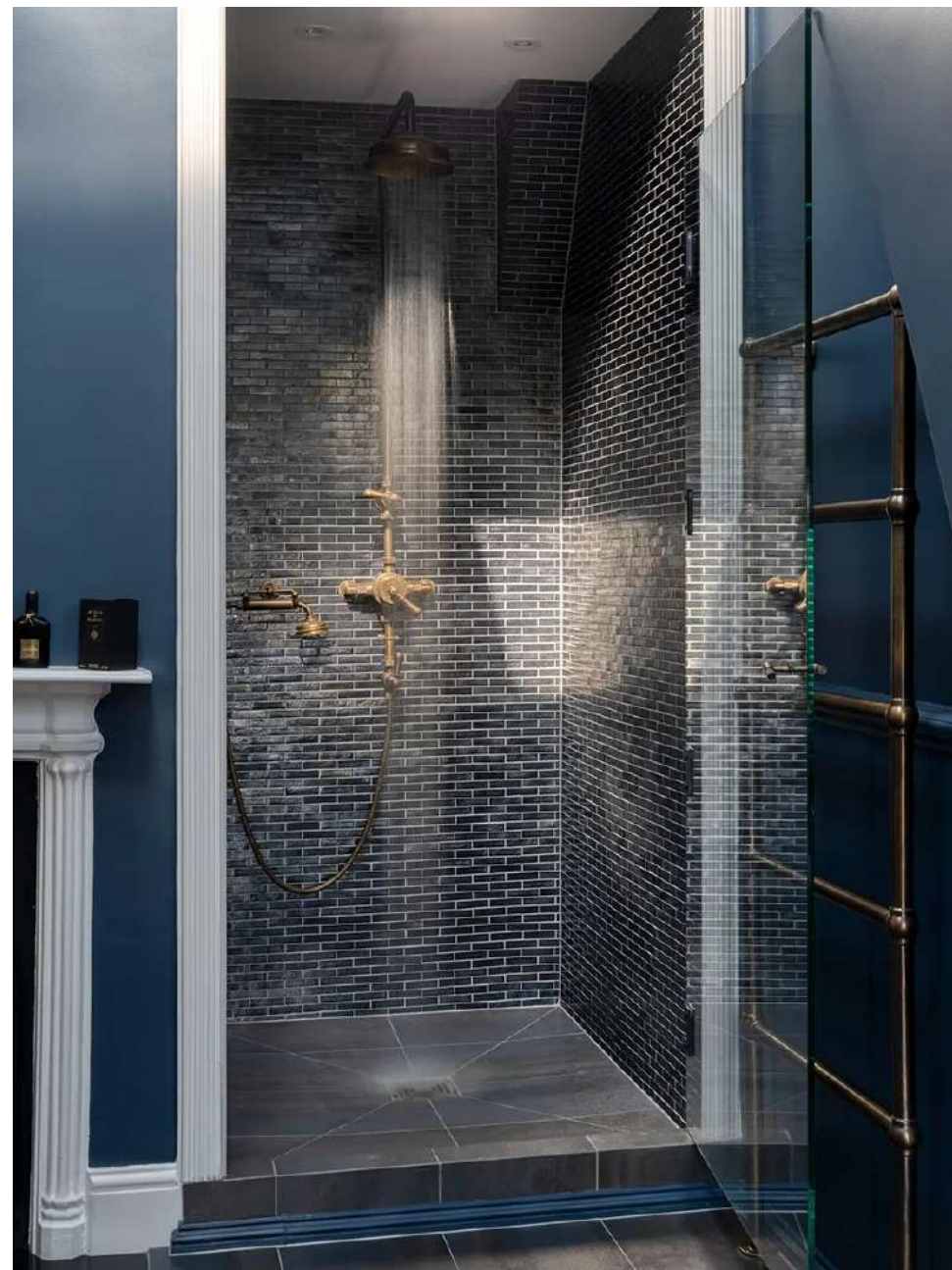




THE GRANGE

This magnificent Georgian Manor House in rural Sussex has undergone extensive renovation work in recent years.

Including; a breath-taking shower room featuring our freestanding Sentinel Aged Brass shower enclosure, and a beautifully appointed family bathroom with a Brass Bateau, Le Thermo Grand Exposed Shower, and The Pырford Marble Washstand.





BEGGAR HILL

When Minet and Andre Dannhauser found their idyllic Edwardian home set amid mature beech woodland in rural Essex they set about the renovation with great enthusiasm. The Exposed Grand Le Thermo combined with a Mayfair Shower Tray makes for a stunning yet elegant addition to this bathroom.







RUE DAUPHINE

Set in the heart of Paris, just a stroll from one of the city's most famous bridges, Le Pont Neuf. This restoration of a character Parisian apartment incorporated one of our most eye-catching products, The Sentinel shower.







KENTISH HALL HOUSE, BIDDENDEN

Nestled in the heart of Kent, this 18th-century Smarden house was in need of a bathroom that would be sympathetic to the age and atmosphere of this property.

The house had been modified over the centuries with different areas adding to its character. This presented the challenge of how to create a functional period feel bathroom in quite a small space – without it feeling cramped. The answer was to complement the original features with demure and understated fittings. Polished nickel pipework was teamed with Catchpole & Rye's Le Bateau Foix bath, and the shower was fitted over the tub to save space. The basin was fitted on a frame, which allowed light through the space and out to the hallway – again preventing the room from appearing cluttered. Finally, the blue-grey colour scheme enhanced the refined mood and original timber floors.

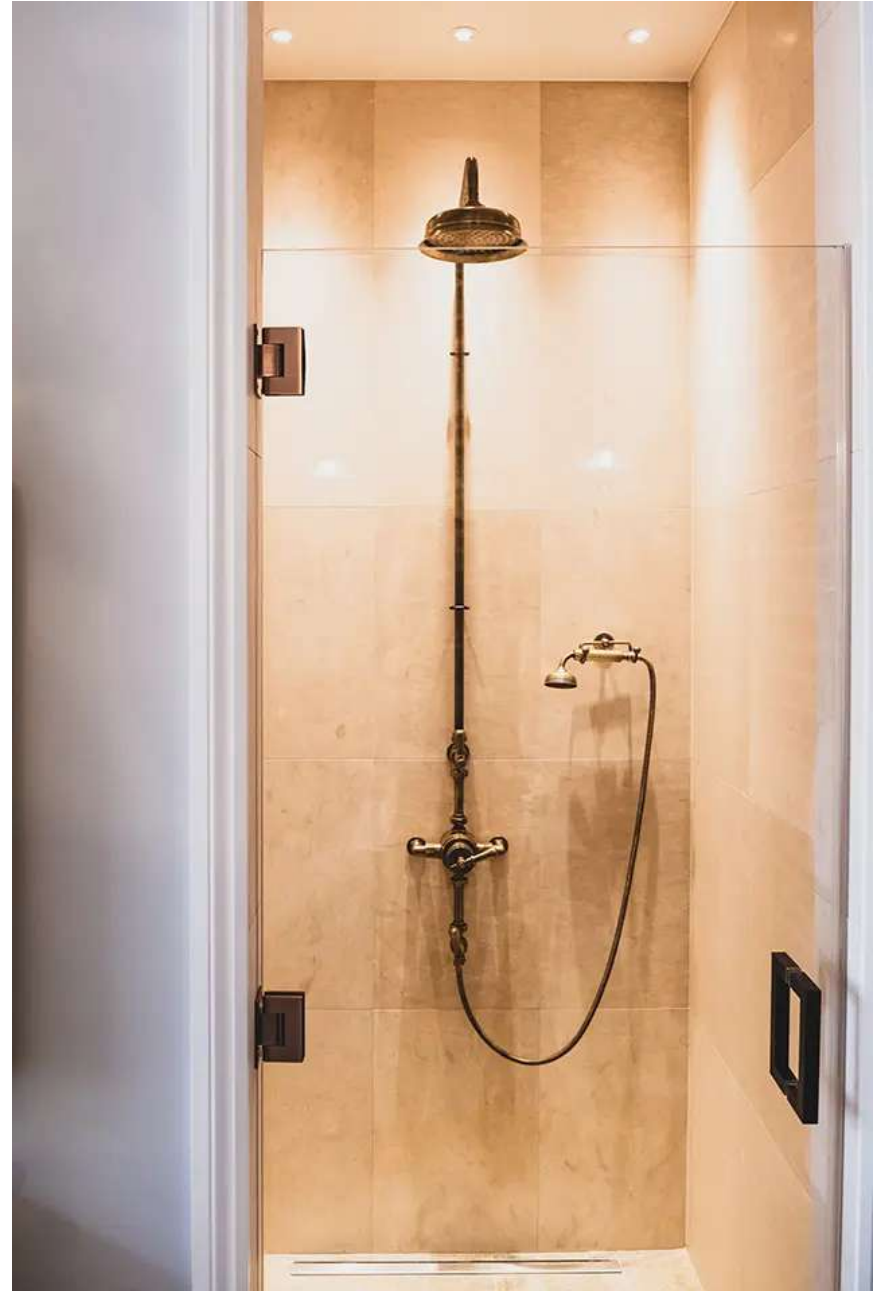




HOST, ST IVES

Conveniently located in the centre of St Ives, this stunning 5-star hotel was a labour of love for owners, and hoteliers, Victoria and Rassie. Transforming a former bank into this stylish lodging was no mean feat. Oozing Cornish charm, the stonework building underwent a large-scale renovation, completely re-designing the layout and repurposing this impressive property.







DUBLIN, IRELAND

Set in the heart of Dublin, this beautiful Edwardian Villa was originally built in 1905. Suzanna Gilmore and her husband purchased the house in 2019 and dedicated the next year to its meticulous renovation.

Inspired by their joint love of mixing antiques with modern design, they have cleverly renovated their property. Taking care to keep the traditional aspects of the Villa while making the overall aesthetic of the home fresh and welcoming.





GREENHAM BARTON

Greenham Barton is a Grade I listed Manor House dating back to the 13th century. Located on the outskirts of Wellington, Somerset, the original house consisted of living quarters around a courtyard with the Great Hall being modernised in the early-mid 16th century. Beautifully showcasing the building's character with a mix of contemporary fixtures, this stunning Master Ensuite in this Hall features our Copper Bateau and Balfour Marble washstand.





The Bateau Collection

Our collection of freestanding metal bathtubs are available in a variety of finishes, with the option of customising your bath with a dedicated plaque, positioned on it's plinth.

Available in three sizes with five signature external finishes, Our Metal Bateau has the versatility to suit any bathroom style from traditional to modern. Our baths are available in standard lengths of 1500mm, 1700mm and 2000mm, and we can manufacture bespoke sizes to suit your individual requirements.



Copper Baths

Copper is the perfect material for handcrafting baths, they are individually constructed from sheets of metal that are beaten, joined, rolled and polished. This makes the permutations for copper bath manufacture and design endless.

Another advantage of copper, along with nickel and brass, is the fact that it is much lighter than its cast iron equivalent. Weighing between 40kg and 50kg means they can be easily manoeuvred and installed to upper floors. Making them a practical choice for loft conversions or penthouse apartments.



The Copper Bateau		<i>Excluding TAX</i>
1500 x 720 x 720mm	All Finishes	£6,500
1700 x 720 x 720mm	All Finishes	£7,500
2000 x 720 x 720mm	All Finishes	£8,750



The Painted Bateau		<i>Excluding TAX</i>
1500 x 720 x 720mm	All Finishes	£6,500
1700 x 720 x 720mm	All Finishes	£7,500
2000 x 720 x 720mm	All Finishes	£8,750



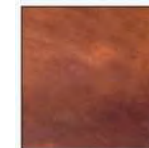
The Verdigris Bateau		<i>Excluding TAX</i>
1500 x 720 x 720mm	All Finishes	£6,500
1700 x 720 x 720mm	All Finishes	£7,500
2000 x 720 x 720mm	All Finishes	£8,750



Polished Copper



Brushed Copper



Antique Copper



Weathered Copper

For additional impact, there is also the option to have a customised plaque, or one of our Catchpole & Rye emblems on the front side. Please contact us if you wish to add this to your order. Bespoke items must be paid in full prior to production. For full specifications and dimensions please email: Technical@catchpoleandrye.com

*Taps, Fittings and Wastes are sold separately.
For our Exposed Bath Waste & Overflow in Standard Finishes, add an extra £550 (plus TAX).
For Premium Finishes, add an extra £660 (plus TAX).*



Brass Baths

Since Roman times, brass alloy was produced for a myriad of uses. Made from both copper and zinc, brass exudes a warm and comfort.

Following the same manufacturing process as copper baths, these unique and handcrafted pieces are meticulously hand finished at our workshops in Kent.

From the glamour of highly Polished Brass, to the sleek look of Brushed Brass, you will find a finish to suit all tastes. Weathered Brass in particular is our most popular finish option.



The Brass Bateau
1500 x 720 x 720mm
1700 x 720 x 720mm
2000 x 720 x 720mm

All Finishes
All Finishes
All Finishes

Excluding TAX

£6,500
£7,500
£8,750



The Painted Bateau
1500 x 720 x 720mm
1700 x 720 x 720mm
2000 x 720 x 720mm

All Finishes
All Finishes
All Finishes

Excluding TAX

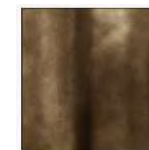
£6,500
£7,500
£8,750



Polished Brass



Brushed Brass



Antique Brass



Weathered Brass

For additional impact, there is also the option to have a customised plaque, or one of our Catchpole & Rye emblems on the front side. Please contact us if you wish to add this to your order. Bespoke items must be paid in full prior to production. For full specifications and dimensions please email: Technical@catchpoleandrye.com

*Taps, Fittings and Wastes are sold separately.
For our Exposed Bath Waste & Overflow in Standard Finishes, add an extra £550 (plus TAX) .
For Premium Finishes, add an extra £660 (plus TAX).*



Nickel Baths

Fabricated from hand-beaten copper sheeting, these lightweight metal baths are electroplated to achieve a lustrous nickel plate. This forms a durable, tarnish resistant surface to the copper beneath. Nickel is a beautifully warm silver finish and its mellow tones make our Nickel Bateau Baths one of the most popular options for traditional and contemporary bathrooms.

The exterior of our nickel baths can be finished in three captivating choices – Polished Nickel, Brushed Nickel, and Antique Nickel. The exterior can be very reflective and will allow the floor finish to flow into the bath.



The Nickel Bateau		<i>Excluding VAT</i>
1500 x 705 x 710mm	All Finishes	£6500
1700 x 705 x 710mm	All Finishes	£7500
2000 x 705 x 710mm	All Finishes	£8750



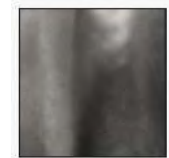
The Painted Bateau		<i>Excluding VAT</i>
1500 x 705 x 710mm	All Finishes	£6500
1700 x 705 x 710mm	All Finishes	£7500
2000 x 705 x 710mm	All Finishes	£8750



Polished Nickel



Brushed Nickel



Antique Nickel

For additional impact, there is also the option to have a customised plaque, or one of our Catchpole & Rye emblems on the front side. Please contact us if you wish to add this to your order. Bespoke items must be paid in full prior to production. For full specifications and dimensions please email: Technical@catchpoleandrye.com

*Taps, Fittings and Wastes are sold separately.
For our Exposed Bath Waste & Overflow in Standard Finishes, add an extra £550 (plus VAT).
For Premium Finishes, add an extra £660 (plus VAT).*

A white roll-top bathtub is the central focus, set in a bright, airy bathroom. To the left, a large, dark-framed mirror leans against the wall. In the foreground, a clear glass vase holds a branch with small white flowers. A window with white shutters is visible behind the tub, and a small stack of soap sits on the windowsill. The floor is light-colored wood, and a piece of light-colored fur is visible in the bottom right corner.

The Cast Metal Collection

Cast in both iron and aluminium here in Kent, England, a Catchpole & Rye roll top bath is the result of generations of craftsmanship.

Our unparalleled collection of freestanding metal bathtubs are available in a wide variety of styles, sizes and finishes.

We offer the option to customise your individual bath with a personal emblem or family crest cast into the metal of the bath.

Using traditional foundry techniques, we manufacture our cast metal baths in iron and aluminium. Cast iron has long been the favoured metal used for traditional baths but as processes evolve we now offer cast aluminium as a lighter alternative.

At 40% of the mass of iron, aluminium is an equally durable and hard-wearing base metal. Each piece from our metal bath collection is made to order at our local Kentish foundry.



Le Bain

The definitive French roll top bath. Perfect for pure luxurious bathing, its deep and sumptuous interior provides a relaxing soak.

Our Le Bain is a glorious roll-top design that can be customised to your requirements and preferred colourway or finish, creating an outstanding bathroom centerpiece.

Le Bain is cast to order from our foundry in Kent, England, and hand-finished in our Workshops by our highly-skilled team of craftsmen.



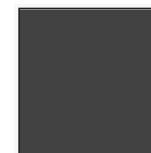
Le Bain		<i>Excluding TAX</i>
1600 x 750 x 675mm	Painted	£8,000
1600 x 750 x 675mm	Charcoal	£8,000
1600 x 750 x 675mm	White	£8,000



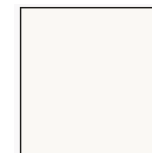
Le Bain		<i>Excluding TAX</i>
1600 x 750 x 675mm	Polished	£10,000



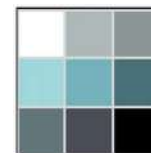
Polished Cast Iron



Charcoal



White



Painted

For additional impact, there is also the option to have a customised plaque, or one of our Catchpole & Rye emblems on the front side. Please contact us if you wish to add this to your order. Bespoke items must be paid in full prior to production. For full specifications and dimensions please email: Technical@catchpoleandrye.com

*Taps, Fittings and Wastes are sold separately.
For our Exposed Bath Waste & Overflow in Standard Finishes, add an extra £550 (plus TAX) .
For Premium Finishes, add an extra £660 (plus TAX).*



The Niederbronn

An antique style with a contemporary edge, the Niederbronn bath is an exemplary design hailing from the town of Niederbronn-Les-Bains in the Alsace region of France.

We reproduce an authentic replica of the Niederbronn bath using our traditional sand-casting techniques from our foundry in Kent, England. Every bath is then hand-finished to perfection – and to your requirements.

This large freestanding bath – which offers 100 litres more space than a traditional bath – is perfect for dual occupancy or indulgent, solo soaks.



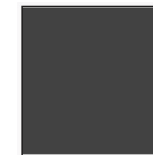
The Niederbronn		<i>Excluding TAX</i>
1690 x 695 x 725mm	Painted	£9,000
1690 x 695 x 725mm	Charcoal	£9,000
1690 x 695 x 725mm	White	£9,000
1690 x 695 x 725mm	Polished	£11,000



The Niederbronn		<i>Excluding TAX</i>
1690 x 695 x 725mm	Painted	£9,750
1690 x 695 x 725mm	Charcoal	£9,750
1690 x 695 x 725mm	White	£9,750
1690 x 695 x 725mm	Polished	£11,750



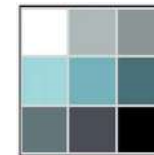
Polished Cast Iron



Charcoal



White



Painted

For additional impact, there is also the option to have a customised plaque, or one of our Catchpole & Rye emblems on the front side. Please contact us if you wish to add this to your order. Bespoke items must be paid in full prior to production. For full specifications and dimensions please email: Technical@catchpoleandrye.com

Taps, Fittings and Wastes are sold separately. For our Exposed Bath Waste & Overflow in Standard Finishes, add an extra £550 (plus TAX) . For Premium Finishes, add an extra £660 (plus TAX).



Le Grand

Introducing Le Grand, a truly stunning centrepiece that promises the most sophisticated soak your bathroom has ever seen. With a narrow rim and a slightly deeper and wider architecture, this imposing double-ended cast iron bath offers increased levels of comfort with its larger internal bathing space.

The elegant structure is made from 100% cast iron and finished by skilled craftsmen. Every cast iron Le Grand can be customised to your requirements and preferred colourway or finish.



Le Grand		<i>Excluding TAX</i>
1570 x 720 x 700mm	Painted	£8,000
1570 x 720 x 700mm	Charcoal	£8,000
1570 x 720 x 700mm	White	£8,000



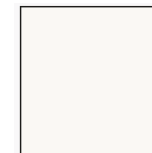
Le Grand		<i>Excluding TAX</i>
1570 x 720 x 700mm	Polished	£10,000



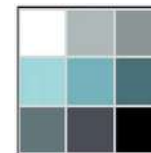
Polished Cast Iron



Charcoal



White



Painted

For additional impact, there is also the option to have a customised plaque, or one of our Catchpole & Rye emblems on the front side. Please contact us if you wish to add this to your order. Bespoke items must be paid in full prior to production. For full specifications and dimensions please email: Technical@catchpoleandrye.com

*Taps, Fittings and Wastes are sold separately.
For our Exposed Bath Waste & Overflow in Standard Finishes, add an extra £550 (plus TAX) .
For Premium Finishes, add an extra £660 (plus TAX).*



Le Piaf

Inspired by French designs, Le Piaf is an unparalleled style that takes the traditional freestanding bath and transforms it into a contemporary piece with four symmetrical, intricately designed feet.

Deep and sumptuous, its roll-top design makes for the most decadent soak, with a customisable exterior for dramatic effect in any bathroom or bedroom.



Le Piaf
 1700 x 780 x 590mm
 1700 x 780 x 590mm
 1700 x 780 x 590mm

Painted
 Charcoal
 White

Excluding TAX
 £7,000
 £7,000
 £7,000



Le Piaf
 1700 x 780 x 590mm

Polished

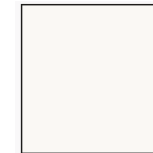
Excluding TAX
 £9,000



Polished Cast Iron



Charcoal



White



Painted

For additional impact, there is also the option to have a customised plaque, or one of our Catchpole & Rye emblems on the front side. Please contact us if you wish to add this to your order.

Bespoke items must be paid in full prior to production. For full specifications and dimensions please email: Technical@catchpoleandrye.com

Taps, Fittings and Wastes are sold separately.

For our Exposed Bath Waste & Overflow in Standard Finishes, add an extra £550 (plus TAX).

For Premium Finishes, add an extra £660 (plus TAX).



Le Vingt-Neuf

A magnificent design with grand ball-and-claw feet for a true style statement. Le Vingt-Neuf is the largest freestanding roll-top bath we manufacture, beautifully enameled in the interior and customised to your preference on the exterior.

Its wide rim and extra-deep tub make for grand bathing either alone – or with enough room for company, if you so choose.



Le Vingt-Neuf
1910 x 870 x 650mm
1910 x 870 x 650mm
1910 x 870 x 650mm

Painted
Charcoal
White

Excluding TAX
£9,500
£9,500
£9,500



Le Vingt-Neuf
1910 x 870 x 650mm

Polished

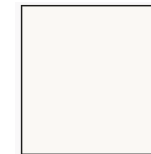
Excluding TAX
£11,500



Polished Cast Iron



Charcoal



White



Painted

For additional impact, there is also the option to have a customised plaque, or one of our Catchpole & Rye emblems on the front side. Please contact us if you wish to add this to your order.

Bespoke items must be paid in full prior to production. For full specifications and dimensions please email: Technical@catchpoleandrye.com

Taps, Fittings and Wastes are sold separately.

For our Exposed Bath Waste & Overflow in Standard Finishes, add an extra £550 (plus TAX).

For Premium Finishes, add an extra £660 (plus TAX).



Le Foix

The epitome of elegance, Le Foix is a traditional 100% cast iron bath with four symmetrical ornate feet, creating the perfect frame for your centrepiece.

Cast by highly skilled craftsmen in Kent, England, the Le Foix uses the same mould as our popular Le Bain just with feet instead of a plinth.

This bath makes a stunning visual statement, as well as providing ultimate comfort for the most luxurious soak.



Le Foix		<i>Excluding TAX</i>
1630 x 710 x 770mm	Painted	£8,000
1630 x 710 x 770mm	Charcoal	£8,000
1630 x 710 x 770mm	White	£8,000



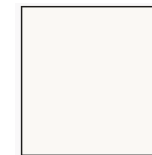
Le Foix		<i>Excluding TAX</i>
1630 x 710 x 770mm	Polished	£10,500



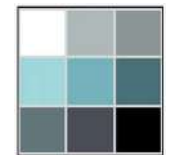
Polished Cast Iron



Charcoal



White



Painted

For additional impact, there is also the option to have a customised plaque, or one of our Catchpole & Rye emblems on the front side. Please contact us if you wish to add this to your order. Bespoke items must be paid in full prior to production. For full specifications and dimensions please email: Technical@catchpoleandrye.com

*Taps, Fittings and Wastes are sold separately.
For our Exposed Bath Waste & Overflow in Standard Finishes, add an extra £550 (plus TAX) .
For Premium Finishes, add an extra £660 (plus TAX).*



The Saracen

Nothing makes a statement quite like The Saracen.

This cast iron bath is deep and comforting in design with a distinctive plinth and a slim, roll-top edge. Originally made in Lyon, France, the cast is taken from an original Saracen bath and then hand-finished in our Kent workshop by highly-skilled craftsmen.

Every cast iron bath can be customised to your requirements and preferred colourway or finish.



The Saracen
1570 x 710 x 660mm
1570 x 710 x 660mm
1570 x 710 x 660mm
1570 x 710 x 660mm

Painted
Charcoal
White
Polished

Excluding TAX
£8,000
£8,000
£8,000
£10,000



The Saracen on Feet
1570 x 710 x 660mm
1570 x 710 x 660mm
1570 x 710 x 660mm
1570 x 710 x 660mm

Painted
Charcoal
White
Polished

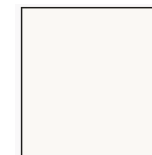
Excluding TAX
£8,750
£8,750
£8,750
£10,750



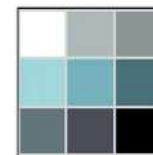
Polished Cast Iron



Charcoal



White



Painted

For additional impact, there is also the option to have a customised plaque, or one of our Catchpole & Rye emblems on the front side. Please contact us if you wish to add this to your order. Bespoke items must be paid in full prior to production. For full specifications and dimensions please email: Technical@catchpoleandrye.com

Taps, Fittings and Wastes are sold separately. For our Exposed Bath Waste & Overflow in Standard Finishes, add an extra £550 (plus TAX) . For Premium Finishes, add an extra £660 (plus TAX).

La Provence

Choose La Provence in any colour of your choice or opt for a striking polished exterior.
With its unique single ended shape, designed to accommodate taps on one end, this traditional freestanding French design is the epitome of elegance.



La Provence
1800 x 750 x 560mm
1800 x 750 x 560mm
1800 x 750 x 560mm

Painted
Charcoal
White

Excluding TAX
£7,000
£7,000
£7,000



La Provence
1800 x 750 x 560mm

Polished

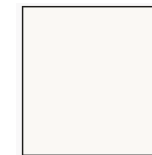
Excluding TAX
£9,000



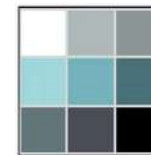
Polished Cast Iron



Charcoal



White



Painted

*For additional impact, there is also the option to have a customised plaque, or one of our Catchpole & Rye emblems on the front side.
Please contact us if you wish to add this to your order.
Bespoke items must be paid in full prior to production. For full specifications and dimensions please email: Technical@catchpoleandrye.com*

*Taps, Fittings and Wastes are sold separately.
For our Exposed Bath Waste & Overflow in Standard Finishes, add an extra £550 (plus TAX) .
For Premium Finishes, add an extra £660 (plus TAX).*

Basins & Washstands

Exclusively made to order, our basins come in a range of configurations ranging from Single to Double and Vanity or Washstand. We can deliver a beautifully tailored unit that suits any room size, shape or style.



The Parisienne Vanity

Introducing our exquisite bow-shaped, marble-top vanity unit, La Parisienne. This classic design makes a grand statement in any bathroom or cloakroom and can be customised to suit your preferences.

Its grand architecture and stunning finish make La Parisienne a must for any bathroom.

This marble-top vanity unit is available as a single (pictured) or a double with a choice of marbles and either painted or wood finishes to choose from – including oak, mahogany and walnut. With elegant storage and symmetrical drawers sit neatly beneath the basin for practicality.

Designed and manufactured in Kent, England.



The Parisienne Vanity Single
790 x 600 x 1160mm All Finishes *Excluding VAT*
£6500

*Available with straight or curved (pictured) Splashback.
Ceramic Basins are included as standard.
For optional metal basins please add an extra £300 plus VAT.
Taps and Fittings are sold separately.*



The Parisienne Vanity Double
1400 x 600 x 1210mm All Finishes *Excluding VAT*
£7950

*Available with straight or curved (pictured) Splashback.
Ceramic Basins are included as standard.
For optional metal basins please add an extra £300 plus VAT.
Taps and Fittings are sold separately.*

For a list of our Marble finishes and Metal finishes please see page 55

Taps and fittings are NOT included with any basin, washstand or vanity unit. These can be purchased separately.

Ceramic undermounted basins are supplied as standard on all marble washstands and wooden vanity units.

However, you can choose a metal basin (undermounted or counter tops as an option for an additional £400 plus vat per unit.

Our Standard finishes include; Silver Nickel, Chrome Plate and Polished Brass.

Our Premium Finishes include; Aged, Brushed and Black Nickel Finishes.

Bespoke items must be paid in full prior to production. For full specifications and dimensions please email: Technical@catchpoleandrye.com

The Pyrford Vanity Unit

A classic design with a contemporary finish, The Pyrford Vanity Unit is a popular choice for those seeking ample bathroom storage. It's generous storage space is not the only appeal, with a marble top and splashback, countless customisation options are possible.

Handcrafted from the finest timbers, available in a variety of wood and painted finishes with a wide choice of marble splashbacks. Taps can either be deck-mounted or placed on the splashback.

Designed and manufactured in Kent, England.



The Pyrford Vanity Single
1000 x 600 x 1290mm All Finishes Excluding TAX
£8,250

*Available with a high (pictured) or low splashback.
Optional Brass, Nickel or Copper inlays are available for an
additional £700 plus TAX.*

*Ceramic Basins are included as standard, for optional metal
basins please add an extra £400 each plus TAX.
Taps and Fittings are sold separately.*



The Pyrford Vanity Double
1600 x 600 x 1290mm All Finishes Excluding TAX
£9,950

*Available with a high (pictured) or low splashback.
Optional Brass, Nickel or Copper inlays are available for an
additional £700 plus TAX.*

*Ceramic Basins are included as standard, for optional metal
basins please add an extra £400 each plus TAX.
Taps and Fittings are sold separately.*

For a list of our Marble finishes and Metal finishes please see page 90

Taps and fittings are NOT included with any basin, washstand or vanity unit. These can be purchased separately.

Ceramic undermounted basins are supplied as standard on all marble washstands and wooden vanity units.

However, you can choose a metal basin (undermounted or counter top as an option for an additional £400 plus vat per unit.

Our Standard finishes include; Silver Nickel, Chrome Plate and Polished Brass.

Our Premium Finishes include; Aged, Brushed and Black Nickel Finishes.

Bespoke items must be paid in full prior to production. For full specifications and dimensions please email: Technical@catchpoleandrye.com

La Parisienne

Blending timeless style and exquisite design, this breathtaking marble washstand with sweeping curves is a signature piece from the Catchpole & Rye collection. Available as a single or double unit, with frames and basins in a variety of marbles and finishes.

Beautifully formed on an elegant solid brass frame, this marble washstand is an opulent take on a classic vintage design. All frames are manufactured from solid brass at our Kent Workshops in England, where they are combined with the highest quality Italian marble to produce a collection of modern classics.



The Parisienne Single Washstand
790 x 600 x 1120mm

Standard Finishes
Premium Finishes

Excluding TAX

£4,750
£5,250

*Available with a straight (pictured) or curved splashback.
Ceramic Basins are included as standard, for optional metal
basins please add an extra £400 each plus TAX.*

Taps and Fittings are sold separately.



The Parisienne Double Washstand
1400 x 600 x 1160mm

Standard Finishes
Premium Finishes

Excluding TAX

£6,500
£7,100

*Available with a straight or curved (pictured) splashback.
Ceramic Basins are included as standard, for optional metal
basins please add an extra £400 each plus TAX.*

Taps and Fittings are sold separately.

For a list of our Marble finishes and Metal finishes please see page 90

Taps and fittings are NOT included with any basin, washstand or vanity unit. These can be purchased separately.

Ceramic undermounted basins are supplied as standard on all marble washstands and wooden vanity units.

However, you can choose a metal basin (undermounted or counter top) as an option for an additional £400 plus vat per unit.

Our Standard finishes include; Silver Nickel, Chrome Plate and Polished Brass.

Our Premium Finishes include; Aged, Brushed and Black Nickel Finishes.

Bespoke items must be paid in full prior to production. For full specifications and dimensions please email: Technical@catchpoleandrye.com

The Pyrford

Elegance comes in many forms and this marble-top washstand is a classic example. The Pyrford Washstand is manufactured at our Kent Workshops in England by highly-skilled craftsmen, where attention to detail is paramount.

Metal frame options include Copper, Nickel, Brass and Chrome, while the splashbacks can be created high or low. Simply specify your choice at the time of ordering. Our ceramic undermounted basins come as standard.

The Pyrford Washstand can be created with an array of stunning marble or stone options, including Arabescato, Portoro, Nero Granito and Verde.



The Pyrford Single Washstand
1000 x 600 x 1290mm

Standard Finishes
Premium Finishes

Excluding TAX
£5,950
£6,350

*Available with a high (pictured) or low splashback.
Ceramic Basins are included as standard, for optional metal
basins please add an extra £400 each plus TAX.*

Taps and Fittings are sold separately.



The Pyrford Double Washstand
1600 x 600 x 1290mm

Standard Finishes
Premium Finishes

Excluding TAX
£7,500
£8,100

*Available with a high (pictured) or low splashback.
Ceramic Basins are included as standard, for optional metal
basins please add an extra £400 each plus TAX.*

Taps and Fittings are sold separately.

For a list of our Marble finishes and Metal finishes please see page 90

Taps and fittings are NOT included with any basin, washstand or vanity unit. These can be purchased separately.

Ceramic undermounted basins are supplied as standard on all marble washstands and wooden vanity units.

However, you can choose a metal basin (undermounted or counter top) as an option for an additional £400 plus vat per unit.

Our Standard finishes include; Silver Nickel, Chrome Plate and Polished Brass.

Our Premium Finishes include; Aged, Brushed and Black Nickel Finishes.

Bespoke items must be paid in full prior to production. For full specifications and dimensions please email: Technical@catchpoleandrye.com

The Pyrford with Shelf

A contemporary marble-top washstand, with a hammered metal shelf and complementary metal basin.

The Pyrford Washstand with Shelf is a classic example of a truly sophisticated bathroom fixture.

The marble-top washstand features clean, straight lines on its grand frame.

The Pyrford Washstand can be created with an array of stunning marble or stone options, including Arabescato, Portoro, Nero Granito or Verde.



The Pyrford Single With Shelf
1000 x 600 x 1290mm

Standard Finishes
Premium Finishes

Excluding TAX

£6,700
£7,300

*Available with high (pictured) or low Splashback.
Metal Basins are included as standard.
Taps and Fittings are sold separately.*



The Pyrford Double With Shelf
1600 x 600 x 1290mm

Standard Finishes
Premium Finishes

Excluding TAX

£8,500
£9,100

*Available with high (pictured) or low Splashback.
Metal Basins are included as standard.
Taps and Fittings are sold separately.*

For a list of our Marble finishes and Metal finishes please see page 90

Taps and fittings are NOT included with any basin, washstand or vanity unit. These can be purchased separately.

Ceramic undermounted basins are supplied as standard on all marble washstands and wooden vanity units.

However, you can choose a metal basin (undermounted or counter tops as an option for an additional £400 plus vat per unit.

Our Standard finishes include; Silver Nickel, Chrome Plate and Polished Brass.

Our Premium Finishes include; Aged, Brushed and Black Nickel Finishes.

Bespoke items must be paid in full prior to production. For full specifications and dimensions please email: Technical@catchpoleandrye.com

The Balfour

Designed to look as though it is floating above the ground, The Balfour basin is ideal for bathrooms or cloakrooms, due to its four-legged frame. Choose from ceramic basins, or opt for a range of metal finishes - including Brass, Copper or Nickel.

The exquisite marble top can also be manufactured to your requirements - we offer Arebascato, Nero Granito, Portoro and Verde.

The Balfour basin is the perfect choice for an irregular or curved wall, found in various listed properties.



The Balfour
900 x 700 x 860mm

Standard Finishes
Premium Finishes

Excluding TAX
£4,250
£4,650

Ceramic Basins are included as standard, for optional metal basins please add an extra £400 each plus TAX.

Taps and Fittings are sold separately.

For a list of our Marble finishes and Metal finishes please see page 90

Taps and fittings are NOT included with any basin, washstand or vanity unit. These can be purchased separately.

Ceramic undermounted basins are supplied as standard on all marble washstands and wooden vanity units.

However, you can choose a metal basin (undermounted or counter top) as an option for an additional £400 plus vat per unit.

Our Standard finishes include; Silver Nickel, Chrome Plate and Polished Brass.

Our Premium Finishes include; Aged, Brushed and Black Nickel Finishes.

Bespoke items must be paid in full prior to production. For full specifications and dimensions please email:

Technical@catchpoleandrye.com



The Kinross

The Kinross Basin is an outstanding marble washstand that stands the test of time. It sits on an intricate, solid-brass frame and takes its design from a vintage basin found in a stately home in Scotland.

This grand design features a beautiful oval marble top, with two intricate legs for a contemporary effect. We offer the option to make this product completely bespoke, with a variety of marble finishes available. The basin and brassware can also be customised in a range of finishes to suit your preference.



The Kinross
900 x 700 x 860mm

Standard Finishes
Premium Finishes

Excluding TAX
£4,250
£4,650

Ceramic Basins are included as standard, for optional metal basins please add an extra £400 each plus TAX.

Taps and Fittings are sold separately.

For a list of our Marble finishes and Metal finishes please see page 90

Taps and fittings are NOT included with any basin, washstand or vanity unit. These can be purchased separately.

Ceramic undermounted basins are supplied as standard on all marble washstands and wooden vanity units.

However, you can choose a metal basin (undermounted or counter top) as an option for an additional £400 plus vat per unit.

Our Standard finishes include; Silver Nickel, Chrome Plate and Polished Brass.

Our Premium Finishes include; Aged, Brushed and Black Nickel Finishes.

Bespoke items must be paid in full prior to production. For full specifications and dimensions please email:

Technical@catchpoleandrye.com

The Manhattan

Striking in its architecture and designed to last a lifetime, this bathroom washstand is a must for the modern home. Its unique linear design features a metal basin, swan-neck spouts and taps positioned to the side, with generous storage space below the basin, adding a minimalist feel for spa-like calm.

Choose from either a single or double unit, then embrace the joy of customising the Manhattan Washstand.



The Manhattan Single Washstand
900 x 600 x 900mm

Standard Finishes
Premium Finishes

Excluding TAX
£6,500
£6,900

*Supplied with a Metal Counter Top Basin.
Taps with an extended spout will be required for this unit.*



The Manhattan Double Washstand
1800 x 600 x 900mm

Standard Finishes
Premium Finishes

Excluding TAX
£9,950
£10,550

*Supplied with a Metal Counter Top Basin.
Taps with an extended spout will be required for this unit.*

For a list of our Marble finishes and Metal finishes please see page 90

Taps and fittings are NOT included with any basin, washstand or vanity unit. These can be purchased separately.

Ceramic undermounted basins are supplied as standard on all marble washstands and wooden vanity units.

However, you can choose a metal basin (undermounted or counter top) as an option for an additional £400 plus vat per unit.

Our Standard finishes include; Silver Nickel, Chrome Plate and Polished Brass.

Our Premium Finishes include; Aged, Brushed and Black Nickel Finishes.

Bespoke items must be paid in full prior to production. For full specifications and dimensions please email:

Technical@catchpoleandrye.com

The Victoria Collection

The Victoria Basin stands on an ornate metal frame, which can be customised to suit your decor.

This unique design with its bevelled edging is a popular choice for those seeking a traditional ceramic sink – with a difference.

It might be compact in size, but the Victoria Cloakroom Basin and Petite Basin do not compromise on style. This is a small cloakroom basin that has been designed for maximum practicality, with sleek curves for a classic yet contemporary style statement.



The Victoria Washstand
635 x 480 x 890mm
Taps and Fittings are sold separately.

Standard Finishes
Premium Finishes

Excluding TAX

£2,000

£2,400



The Victoria Cloakroom Basin
525 x 385 x 240mm
Taps and Fittings are sold separately.

Ceramic

Excluding TAX

£750



The Victoria Petite Cloakroom Basin
425 x 235 x 185mm
Taps and Fittings are sold separately.

Ceramic

Excluding TAX

£650

Taps and fittings are NOT included with any basin, washstand or vanity unit. These can be purchased separately.

Our Standard finishes include; Silver Nickel, Chrome Plate and Polished Brass.

Our Premium Finishes include; Aged, Brushed and Black Nickel Finishes.

Bespoke items must be paid in full prior to production. For full specifications and dimensions please email: Technical@catchpoleandrye.com

The Empress Collection

The simple, understated design of the Empress Console guarantees an elegance that will never date. This stunning ceramic basin with its exquisite base is one of our most popular products.

The Empress Basin is the jewel in the Catchpole & Rye crown. A beautiful ceramic basin with smooth, flowing lines and gentle contours. Choose from a matching pedestal or an elegant frame and customise each to your desired taste.



The Empress Console Basin
850 x 600 x 930mm
Taps and Fittings are sold separately.

Standard Finishes
Premium Finishes

Excluding TAX
£2,680
£3,100



The Empress Basin on Frame
650 x 550 x 930mm
Taps and Fittings are sold separately.

Standard Finishes
Premium Finishes

Excluding TAX
£2,000
£2,400

Taps and fittings are NOT included with any basin, washstand or vanity unit. These can be purchased separately.

Our Standard finishes include; Silver Nickel, Chrome Plate and Polished Brass.

Our Premium Finishes include; Aged, Brushed and Black Nickel Finishes.

Bespoke items must be paid in full prior to production. For full specifications and dimensions please email: Technical@catchpoleandrye.com

The Empress Cloakroom Basins

The Empress Cloakroom Basin is the perfect accompaniment to the Empress collection. A beautiful ceramic hand basin with smooth, flowing lines and gentle contours. Choose our matching Empress W/C Pan for a uniform cloakroom suite.

The Empress Petite Cloakroom Basin is a classic design. Its ornate shape is understated but truly elegant, it would take pride of place in any modern bathroom.



The Empress Cloakroom Basin
455 x 390 x 215mm
Taps and Fittings are sold separately.

Standard Finishes *Excluding TAX*
£750



The Empress Petite Cloakroom Basin
400 x 220 x 180mm
Taps and Fittings are sold separately.

Ceramic *Excluding TAX*
£650

Taps and fittings are NOT included with any basin, washstand or vanity unit. These can be purchased separately.

Our Standard finishes include; Silver Nickel, Chrome Plate and Polished Brass.

Our Premium Finishes include; Aged, Brushed and Black Nickel Finishes.

Bespoke items must be paid in full prior to production. For full specifications and dimensions please email: Technical@catchpoleandrye.com



Thermostatic Showers

Our range of showers are the embodiment of modern luxury. Manufactured in Kent, they can be made to match any aesthetic through our variety of brassware finishes.

Made from solid brass, all of our showers come with a fully thermostatic shower valve. The bore and capability of this high performance unit allows optimization of available water pressures.

With the Le Thermo range, you can choose from either an exposed pipework version, or a concealed unit which has a minimal, contemporary appearance.

La Fontaine levers come as standard, however you can request one of our other tap heads or lever options should you wish.

Please note that the main lever on the valve can only have La Fontaine/Noire or Solheim lever option.



Le Thermo Exposed

Le Thermo is a brass shower with tactile pipework and an elegant finish. Powerful in both style and functionality, it is a must for the modern bathroom.

Le Thermo Showers are made from solid brass at our Kent Workshops in England and all feature a fully thermostatic shower valve as standard. The water pressure is adjustable and La Fontaine levers come as standard, however you can request an alternative tap head or lever option. Please note that the main lever on the valve can only have La Fontaine/Noire or Solheim lever option.



Le Thermo Exposed	Standard Finish	<i>Excluding TAX</i> £2,400
	Premium Finish	£2,880

*The Le Thermo range comes with an 8" Shower Rose as standard.
For a 10" Rose, add an extra £250 plus TAX.
For a 12" Rose, add an extra £300 plus TAX*



Le Thermo Grand Exposed	Standard Finish	<i>Excluding TAX</i> £3,000
	Premium Finish	£3,600

*The Le Thermo range comes with an 8" Shower Rose as standard.
For a 10" Rose, add an extra £250 plus TAX.
For a 12" Rose, add an extra £300 plus TAX*

For a list of our Metal finishes please see page 90

Our Standard finishes include; Silver Nickel, Chrome Plate and Polished Brass.

Our Premium Finishes include; Aged, Brushed and Black Nickel Finishes.

Bespoke items must be paid in full prior to production. For full specifications and dimensions please email: Technical@catcpoleandrye.com

Le Thermo Concealed

Magnificently simple – but beautifully designed – The Le Thermo Concealed brass shower offers a contemporary take on a traditional product.

It boasts elegantly hidden pipework and minimal exposed controls and fittings.

The Le Thermo Concealed provides a more contemporary appearance without compromising on its classic design. This shower has been adapted to allow the pipework to be concealed behind a stone or tiled wall, sitting perfectly within a modern marble or granite setting. This product also comes with an additional hand shower.



Le Thermo Concealed

Standard
Premium

Excluding TAX
£2,800
£3,360



*The Le Thermo range comes with an 8" Shower Rose as standard.
For a 10" Rose, add an extra £250 plus TAX
For a 12" Rose, add an extra £300 plus TAX*



Le Thermo Grand Concealed

Standard
Premium

Excluding TAX
£3,400
£4,080



*The Le Thermo range comes with an 8" Shower Rose as standard.
For a 10" Rose, add an extra £250 plus TAX
For a 12" Rose, add an extra £300 plus TAX*

For a list of our Metal finishes please see page 90

Our Standard finishes include; Silver Nickel, Chrome Plate and Polished Brass.

Our Premium Finishes include; Aged, Brushed and Black Nickel Finishes.

Bespoke items must be paid in full prior to production. For full specifications and dimensions please email: Technical@catchpoleandrye.com

The Spine

This striking industrial design makes for a luxury shower experience with a difference. The Spine Shower is the perfect fusion of contemporary design and modern functionality, making a significant visual impact in what may be a limited space.

A 12" shower rose features alongside eight powerful body jets. The Spine has also been designed to deliver hot-water jets through precision-cut perforations for a truly immersive experience across the whole body.



The Spine - Luxury Shower
663 x 2300mm

Standard Finish
Premium Finish

Excluding TAX
£7,500
£9,000

*The Spine comes with our largest 12" Shower Rose as standard.
Integrated body sprays are incorporated within the pipework.*

For a list of our Metal finishes please see page 90

Our Standard finishes include; Silver Nickel, Chrome Plate and Polished Brass.

Our Premium Finishes include; Aged, Brushed and Black Nickel Finishes.

Bespoke items must be paid in full prior to production. For full specifications and dimensions please email: Technical@catchpoleandrye.com



La Cage

This grand, eight-foot tall luxury shower enclosure creates a true spa-like experience thanks to its magnificent encompassing brass frame. Inspired by a 19th-century French original, the unique design envelops the user in a brass cage with ornate perforated piping details.

Unlike its predecessor, this modern luxury shower enclosure comes with quarter-turn ceramic disc technology, integrated flow restrictors and a thermostatic mixing valve. True to the original, it retains a 12-inch diameter shower rose and over two hundred body jets, not forgetting a 'toe testing' tap at its base – the ultimate showering experience.



La Cage - Luxury Shower
1080mm x 1200mm x 2450mm

Standard Finish
Premium Finish

Excluding TAX
£14,000
£16,800

*La Cage comes with our largest 12" Shower Rose as standard.
Integrated body sprays are incorporated within the pipework.*

For a list of our Metal finishes please see page 90

Our Standard finishes include; Silver Nickel, Chrome Plate and Polished Brass.

Our Premium Finishes include; Aged, Brushed and Black Nickel Finishes.

Bespoke items must be paid in full prior to production. For full specifications and dimensions please email: Technical@catchpoleandrye.com



La Cage D'Amour

Introducing the most romantic shower you will ever experience.

Taking inspiration from the 19th-century, La Cage d'Amour is an innovative English design that fuses two of our La Cage single showers into a heart-shaped enclosure for dual occupancy, creating a truly striking double shower.

This grand eight-foot tall luxury shower enclosure creates a true spa-like experience thanks to its magnificent frame that envelops the users. Unlike its predecessor, this modern luxury shower enclosure comes with quarter-turn ceramic disc technology, integrated flow restrictors and a thermostatic mixing valve.

True to the original, it retains two 12-inch diameter shower roses and over two hundred body jets, not forgetting a 'toe testing' tap at its base – the ultimate showering experience.



La Cage D'Amour- Luxury Shower
2166 x 1348 x 2450mm

Standard Finish
Premium Finish

Excluding TAX
£20,000
£24,000

*La Cage D'Amour comes with our largest 12" Shower Rose as standard.
Integrated body sprays are incorporated within the pipework.*

For a list of our Metal finishes please see page 90

*Our Standard finishes include; Silver Nickel, Chrome Plate and Polished Brass.
Our Premium Finishes include; Aged, Brushed and Black Nickel Finishes.*

Bespoke items must be paid in full prior to production. For full specifications and dimensions please email: Technical@catchpoleandrye.com

The Sentinel

The Sentinel is a luxury walk-in shower with endless design possibilities. Freestanding, with a glass enclosure and cast metal tray, it can be placed anywhere in the bathroom thanks to easy installation.

The Sentinel is based on a 1900s Edwardian cast iron shower bath and provides a generous showering area with facilities for an overhead shower, handspray and body jets.

This luxury walk-in shower can stand alone and creates a magnificent presence in a room. The shower rose is a 12" classic and all pipework is made with the highest quality brass that can be finished in a number of styles including Nickel, Chrome and Copper – or traditional Brass. The Sentinel is our only combined model for those seeking a shower that will leave a lasting impression.



The Sentinel - Luxury Shower
1023 x 1023 x 2500mm

Standard Finish
Premium Finish

Excluding TAX
£24,000
£28,800

*The Sentinel comes with our largest 12" Shower Rose as standard.
Integrated body sprays are incorporated within the pipework.*

For a list of our Metal finishes please see page 90

Our Standard finishes include; Silver Nickel, Chrome Plate and Polished Brass.

Our Premium Finishes include; Aged, Brushed and Black Nickel Finishes.

Bespoke items must be paid in full prior to production. For full specifications and dimensions please email: Technical@catchpoleandrye.com



The Mayfair Shower Tray

This luxurious shower tray provides a truly unique bathroom feature. A copper or brass tray is built around a substantial metal subframe providing a solid and durable product.

The simple, bevelled indents not only offer a stunning design, but also channel water to the centrally positioned shower waste. The Mayfair will make a grand statement in any bathroom and is perfect when teamed with our Le Thermo range of showers.

Available in five standard sizes and three exquisite finishes – nickel, brass and copper. Every product is handmade and finished by highly skilled craftsmen at our Kent Workshops in England. As such, we can also manufacture the Mayfair to bespoke measurements when specified at the time of ordering.



The Mayfair Shower Tray
 1000 x 1000mm
 1000 x 1200mm
 1000 x 1500mm
 1000 x 1800mm
 1000 x 2000mm

	<i>Excluding TAX</i>
Standard Finish	£5,000
Standard Finish	£5,500
Standard Finish	£6,500
Standard Finish	£7,500
Standard Finish	£9,500

For the tray in Aged, Brushed and Black Nickel Finishes, please add an additional 20% plus TAX. Bespoke sizes are available on request.

For a list of our Metal finishes please see page 90

Our Standard finishes include; Silver Nickel, Chrome Plate and Polished Brass.

Our Premium Finishes include; Aged, Brushed and Black Nickel Finishes.

Bespoke items must be paid in full prior to production. For full specifications and dimensions please email: Technical@catchpoleandrye.com



Taps & Faucets

All of our luxury bathroom taps are made from solid brass of the highest quality and fitted with a quarter turn ceramic disc mechanism.

These high specification fittings not only allow for ease of use, but also increase the overall life expectancy of the item.

Tap head styles include the Solheim, La Fontaine, La Loire and the English.

The Solheim Lever is suitable for modern and rough luxe settings.

For descriptions on our metal finishes, please refer to the finishes guide at the back of this brochure.

Taps & Faucets

All our luxury bathroom taps are made from solid brass of the highest quality and fitted with a quarter turn ceramic disc mechanism. These high specification fittings not only allow for ease of use, but also increase the general life expectancy.

For descriptions on our metal finishes, please refer to the finishes guide in this brochure.

La Loire | Tap Head

The La Loire tap head features a distinctive French 19th-century appearance with drooped handles and crackle glazed ceramic indices. The text on the indices is in French 'CHAUD' and 'FROID'.



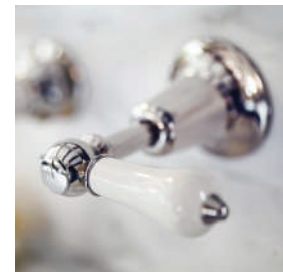
The English | Tap Head

The English tap originates from an Edwardian design with classic capstan hand wheels, featuring crackle glazed ceramic indices for an authentically aged appearance. The writing on the indices comes with the traditional 'HOT' and 'COLD'.



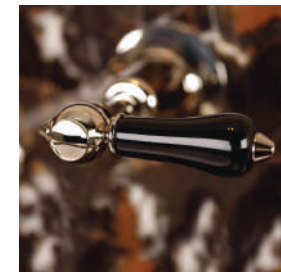
La Fontaine | Tap Head

La Fontaine features a chic ceramic lever, fired in our own kiln with a unique crackle glaze finish, for an authentically aged appearance.



La Fontaine Noire | Tap Head

La Fontaine Noire is a sophisticated black ceramic lever with a smooth glossy appearance suitable for more contemporary installations.



The Solhiem | Tap Head

The Solhiem Lever is turned from solid brass at our engineering workshops in Kent. Suitable for modern and Rough Luxe settings.



Our Standard finishes include; Silver Nickel, Chrome Plate and Polished Brass.

Our Premium Finishes include; Aged, Brushed and Black Nickel Finishes.

Bespoke items must be paid in full prior to production. For full specifications and dimensions please email: Technical@catchpoleandrye.com

Basin Taps

Expertly manufactured to the highest standards, Our taps & faucets are made to match any aesthetic through our variety of brassware finishes. They are the perfect addition to any bathroom.

Tap head styles include the Solheim, La Fontaine, La Loire and The English. The Solheim Lever is suitable for modern and rough luxe settings.

All of our luxury taps range feature quarter-turn disc mechanisms within each individual tap.



Our Standard finishes include; Silver Nickel, Chrome Plate and Polished Brass.

Our Premium Finishes include; Aged, Brushed and Black Nickel Finishes.

Bespoke items must be paid in full prior to production. For full specifications and dimensions please email: Technical@catchpoleandrye.com

Basin and Bidet Taps



Basin Pillar Taps | Deck Mounted

La Loire | The English | La Fontaine | La Fontaine Noire

The Solbiem

Standard Finishes £500
Premium Finishes £600

Standard Finishes £600
Premium Finishes £700

Excluding TAX



The Three Hole Basin Mixer | Wall Mounted

La Loire | The English | La Fontaine | La Fontaine Noire

The Solbiem

Standard Finishes £850
Premium Finishes £1,020

Standard Finishes £950
Premium Finishes £1,140

Excluding TAX



Basin Monobloc | Deck Mounted

La Loire | The English | La Fontaine | La Fontaine Noire

The Solbiem

Standard Finishes £700
Premium Finishes £840

Standard Finishes £800
Premium Finishes £960

Excluding TAX



Three Hole Swan Basin Mixer | Wall Mounted

La Loire | The English | La Fontaine | La Fontaine Noire

The Solbiem

Standard Finishes £850
Premium Finishes £1,020

Standard Finishes £950
Premium Finishes £1,140

Excluding TAX



Three Hole Basin Mixer | Deck Mounted

La Loire | The English | La Fontaine | La Fontaine Noire

The Solbiem

Standard Finishes £850
Premium Finishes £1,020

Standard Finishes £950
Premium Finishes £1,140

Excluding TAX



Bidet Monobloc | Deck Mounted

La Loire | The English | La Fontaine | La Fontaine Noire

The Solbiem

Standard Finishes £700
Premium Finishes £840

Standard Finishes £800
Premium Finishes £960

Excluding TAX



The Swan Basin Mixer | Deck Mounted

La Loire | The English | La Fontaine | La Fontaine Noire

The Solbiem

Standard Finishes £850
Premium Finishes £1,020

Standard Finishes £950
Premium Finishes £1,140

Excluding TAX



The Extended Swan Basin Mixer | Deck Mounted

La Loire | The English | La Fontaine | La Fontaine Noire

The Solbiem

Standard Finishes £950
Premium Finishes £1,140

Standard Finishes £1,050
Premium Finishes £1,260

Excluding TAX



Our Standard finishes include; Silver Nickel, Chrome Plate and Polished Brass.

Our Premium Finishes include; Aged, Brushed and Black Nickel Finishes.

Bespoke items must be paid in full prior to production. For full specifications and dimensions please email: Technical@catchpoleandrye.com

Basin & Bidet

La Loire

The English

La Fontaine

La Fontaine Noire

The Solbiem

Basin Pillar Taps
Deck Mounted



Basin Monobloc
Deck Mounted



Three Hole Basin Mixer
Deck Mounted



The Swan Basin Mixer
Deck Mounted



The Extended Swan Basin Mixer
Deck Mounted



The Three Hole Basin Mixer
Wall Mounted



The Swan Basin Mixer
Wall Mounted



Bidet Monobloc
Deck Mounted



Bath Taps

With different plumbing styles to suit all tastes, our range of luxury bath taps come in floor-standing, wall-mounted, and deck-mounted options. Finished in any of our brassware finishes, we also have five tap head styles to choose from in both traditional English and elegant French designs.

Every tap is hand finished at our Kent Workshops in England, with countless design possibilities. Finish options include Aged/Brushed/Polished Brass and Copper, Black/Brushed/Silver Nickel, Brushed Chrome, or Chrome Plate.

All of our luxury taps range feature quarter-turn disc mechanisms within each individual tap.



Our Standard finishes include; Silver Nickel, Chrome Plate and Polished Brass.

Our Premium Finishes include; Aged, Brushed and Black Nickel Finishes.

Bespoke items must be paid in full prior to production. For full specifications and dimensions please email: Technical@catchpoleandrye.com

Bathtub Taps



Bathtub Pillar Taps | Deck Mounted
La Loire | The English | La Fontaine | La Fontaine Noire

The Solbiem

	<i>Excluding TAX</i>
Standard Finishes	£600
Premium Finishes	£700
Standard Finishes	£700
Premium Finishes	£800



**The Bathtub Filler with Wall Plate
Wall Mounted**
La Loire | The English | La Fontaine | La Fontaine Noire

The Solbiem

	<i>Excluding TAX</i>
Standard Finishes	£1,800
Premium Finishes	£2,160
Standard Finishes	£1,900
Premium Finishes	£2,280



The Three Hole Bathtub Filler | Deck Mounted
La Loire | The English | La Fontaine | La Fontaine Noire

The Solbiem

	<i>Excluding TAX</i>
Standard Finishes	£1,200
Premium Finishes	£1,400
Standard Finishes	£1,300
Premium Finishes	£1,540



**The Bathtub Shower Mixer with Wall Plate
Wall Mounted**
La Loire | The English | La Fontaine | La Fontaine Noire

The Solbiem

	<i>Excluding TAX</i>
Standard Finishes	£2,100
Premium Finishes	£2,520
Standard Finishes	£2,200
Premium Finishes	£2,640



The Swan Bathtub Filler | Deck Mounted
La Loire | The English | La Fontaine | La Fontaine Noire

The Solbiem

	<i>Excluding TAX</i>
Standard Finishes	£1,200
Premium Finishes	£1,440
Standard Finishes	£1,300
Premium Finishes	£1,540



The Bathtub Filler on Standpipes|Freestanding
La Loire |The English | La Fontaine | La Fontaine Noire

The Solbiem

	<i>Excluding TAX</i>
Standard Finishes	£2,400
Premium Finishes	£2,880
Standard Finishes	£2,500
Premium Finishes	£3,000



The Bathtub Filler | Deck Mounted
La Loire | The English | La Fontaine | La Fontaine Noire

The Solbiem

	<i>Excluding TAX</i>
Standard Finishes	£1,300
Premium Finishes	£1,540
Standard Finishes	£1,400
Premium Finishes	£1,680



The Bathtub Shower Mixer on Standpipes| Freestanding
La Loire |The English | La Fontaine | La Fontaine Noire

The Solbiem

	<i>Excluding TAX</i>
Standard Finishes	£2,700
Premium Finishes	£3,240
Standard Finishes	£2,900
Premium Finishes	£3,580



The Bathtub Shower Mixer | Deck Mounted
La Loire | The English | La Fontaine | La Fontaine Noire

The Solbiem

	<i>Excluding TAX</i>
Standard Finishes	£1,600
Premium Finishes	£1,920
Standard Finishes	£1,700
Premium Finishes	£2,020

*Our Standard finishes include; Silver Nickel, Chrome Plate and Polished Brass.
Our Premium Finishes include; Aged, Brushed and Black Nickel Finishes.*

Bespoke items must be paid in full prior to production. For full specifications and dimensions please email: Technical@catchpoleandrye.com

Bathtub

Bathtub Pillar Taps
Deck Mounted



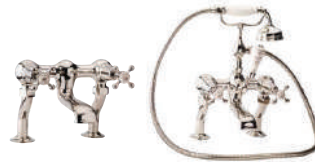
Three Hole Bathtub Filler
Wall Mounted



Three Hole Swan Bathtub Filler
Wall Mounted



The Bathtub Filler &
The Bathtub Shower Mixer
Deck Mounted



The Bathtub Filler &
The Bathtub Shower Mixer
Wall Mounted



The Bathtub Filler on
Standpipes
Freestanding



The Bathtub Shower Mixer on
Standpipes
Freestanding



Kitchen Taps

Our kitchen taps are elegance defined. The long, arching spout with symmetrical cranked legs make this design a popular choice among many of our clients.

We offer a number of stunning finishes, including Aged/Brushed/Polished Brass and Copper, Black/Brushed/ Silver Nickel, Brushed Chrome, or Chrome Plate. Each product is designed and hand-finished at our Kent Workshops in England.

We also manufacture these taps with several different levers, so you can find the perfect tap for your kitchen setting.



Bib Taps | Deck Mounted

La Loire | The English | La Fontaine | La Fontaine Noire

Standard Finishes *Excluding TAX*
£780
Premium Finishes £936

The Solbiem

Standard Finishes £880
Premium Finishes £1036



Mixer | Deck Mounted

La Loire | The English | La Fontaine | La Fontaine Noire

Standard Finishes *Excluding TAX*
£780
Premium Finishes £936

The Solbiem

Standard Finishes £880
Premium Finishes £1,036



Monobloc | Deck Mounted

La Loire | The English | La Fontaine | La Fontaine Noire

Standard Finishes *Excluding TAX*
£780
Premium Finishes £936

The Solbiem

Standard Finishes £880
Premium Finishes £1,036

Our Standard finishes include; Silver Nickel, Chrome Plate and Polished Brass.

Our Premium Finishes include; Aged, Brushed and Black Nickel Finishes.

Bespoke items must be paid in full prior to production. For full specifications and dimensions please email: Technical@catchpoleandrye.com



Cisterns, Lavatories and Seats

From High-Level cisterns to Luxury Bidets, our range of lavatories work beautifully in master bathrooms and guest cloakrooms alike.

Our cistern ensembles include a flush pipe, cistern brackets, lever and all internal workings.

Fittings may modified in finish to suit your style preferences.

Every product is handmade and finished by highly skilled craftsmen at our Kent Workshops in England.

Metal High Level Cistern Ensemble

Our metal cisterns are available in three distinct designs. The Deluge, The Regency and the C&R Wheatsheaf. These are made from the highest grade metal and come in an array of painted and plated options.

Hand finished in our workshops, these cast metal cisterns are available as High or Low level W/C Ensembles. Customisation is a popular choice, names, logos or emblems can be cast to your specification.

Fittings can of course be modified in finish to suit your style preferences. We offer a number of Nickel, Chrome, Brass and Copper finishes as standard.

Please note Aged Brass, Aged Copper or Black Nickel require an additional fee.



The Deluge



The Regency



The C&R Wheatsheaf

All Cistern Designs | High Level Ensemble

			<i>Excluding TAX</i>
Painted Cistern	500 x 215 x 311mm	Standard Finish	£3,000
Nickel Cistern	500 x 215 x 311mm	Standard Finish	£3,000
Copper Cistern	500 x 215 x 311mm	Standard Finish	£3,000
Brass Cistern	500 x 215 x 311mm	Standard Finish	£3,000

Standard pipework finishes are Silver Nickel, Chrome Plate and Polished Brass. An additional £200 will be applied to Aged, Brushed and Black Nickel finishes.

Text on the Deluge can be customised for an extra £1,000 plus TAX.

Please note that the W/C Pan and Lavatory Seat are priced separately.

The recommended maximum height range for high level ensembles is 1800mm to 2200mm. Please allow an extra 100mm for the cistern lever.

For a list of our Metal finishes please see page 90

Our Standard finishes include; Silver Nickel, Chrome Plate and Polished Brass.

Our Premium Finishes include; Aged, Brushed and Black Nickel Finishes.

Bespoke items must be paid in full prior to production. For full specifications and dimensions please email: Technical@catchpoleandrye.com

Metal Low Level Cistern Ensemble

Our metal cisterns are available in four distinct designs.

The Deluge, The Regency and the C&R Wheatsheaf.

These are made from the highest grade metal and come in an array of painted and plated options.

Hand finished in our workshops, these cast metal cisterns are available as High or Low level W/C Ensembles.

Customisation is a popular choice, names, logos or emblems can be cast to your specification.

Fittings can of course be modified in finish to suit your style preferences.

We offer a number of Nickel, Chrome, Brass and Copper finishes as standard

Please note Aged Brass, Aged Copper or Black Nickel require an additional fee.



The Deluge



The Regency



The C&R Wheatsheaf



All Cistern Designs | Low Level Ensemble

			<i>Excluding TAX</i>
Painted Cistern	500 x 215 x 311mm	Standard Finish	£2,800
Nickel Cistern	500 x 215 x 311mm	Standard Finish	£2,800
Copper Cistern	500 x 215 x 311mm	Standard Finish	£2,800
Brass Cistern	500 x 215 x 311mm	Standard Finish	£2,800

Standard pipework finishes are Silver Nickel, Chrome Plate and Polished Brass. An additional £200 will be applied to Aged, Brushed and Black Nickel finishes.

Text on the Deluge can be customised for an extra £1,000 plus TAX.

Please note that the W/C Pan and Lavatory Seat are priced separately.

For a list of our Metal finishes please see page 90

Our Standard finishes include; Silver Nickel, Chrome Plate and Polished Brass.

Our Premium Finishes include; Aged, Brushed and Black Nickel Finishes.

Bespoke items must be paid in full prior to production. For full specifications and dimensions please email: Technical@catchpoleandrye.com



The Empress Cistern Ensemble

A simple, elegant range of high-quality ceramic products, The Empress Collection is ideal for those who prefer traditional bathroom suites with an understated touch. The Empress Low-Level Cistern is a popular choice for those seeking something chic, classic and elegant.

Our cistern ensembles include a flush pipe, cistern brackets, lever and all internal workings. Please allow an extra 100mm for your lever. Fittings on all products can of course be modified in finish to suit your style preferences on all our products



The Empress | High Level Ensemble

455 x 230 x 414mm

Standard Finish	£1,200
Premium Finish	£1,400

Please note that the W/C pan and lavatory seat are priced separately. The recommended maximum height range for high level ensembles is 1800mm to 2200mm.

Please also allow an extra 100mm for the cistern lever.



The Empress | Low Level Ensemble

455 x 230 x 414mm

Standard Finish	£900
Premium Finish	£1,100

Please note that the W/C pan and lavatory seat are priced separately.



The Empress | Close Coupled Ensemble

455 x 732 x 830mm

Ceramic	£1,500
---------	--------

Please note that the W/C pan and lavatory seat are priced separately.

For a list of our Metal finishes please see page 90

Our Standard finishes include; Silver Nickel, Chrome Plate and Polished Brass.

Our Premium Finishes include; Aged, Brushed and Black Nickel Finishes.

Bespoke items must be paid in full prior to production. For full specifications and dimensions please email: Technical@catchpoleandrye.com

The Victoria Cistern Ensemble

There are traditional bathroom suites and then there's The Victoria Collection. The Victoria cistern is timeless and understated, with high-quality metalwork finishes to complement its classic ceramic architecture.

Few collections offer the striking simplicity and elegance of The Victoria Collection. Handcrafted in the Potteries, the range consists of a chic high-level cistern, a bidet and a classic WC pan.

High-level cisterns are placed much higher on the wall, for a vintage look and feel. This includes the high-level flush pipe, cistern brackets, ceramic lever and all internal workings.



The Victoria | High Level Ensemble

445 x 255 x 376mm

Standard Finish
Premium Finish

Excluding TAX

£1,200
£1,400

Please note that the W/C pan and lavatory seat are priced separately. The recommended maximum height range for high level ensembles is 1800mm to 2200mm.

Please also allow an extra 100mm for the cistern lever.

The Victoria | Low Level Ensemble

445 x 255 x 376mm

Standard Finish
Premium Finish

Excluding TAX

£900
£1,100

Please note that the W/C pan and lavatory seat are priced separately.

For a list of our Metal finishes please see page 90

Our Standard finishes include; Silver Nickel, Chrome Plate and Polished Brass.

Our Premium Finishes include; Aged, Brushed and Black Nickel Finishes.

Bespoke items must be paid in full prior to production. For full specifications and dimensions please email: Technical@catchpoleandrye.com



Lavatories

Our traditional toilet pans are the result of generations of British craftsmanship and are handmade to the highest quality in Stoke on Trent. All of our designs are beautifully crafted and feature a beautifully rounded rim and a curved bowl for a simple yet sophisticated bathroom design.

Traditional and simple in their design and structure, they are ideal for those who favour bathroom suites with an understated touch.



The Empress | W/C Pan

370 x 592 x 405mm

Ceramic

Excluding TAX
£650

Please note the lavatory seat is sold separately



The Victoria | W/C Pan

360 x 485 x 400mm

Ceramic

Excluding TAX
£650

Please note the lavatory seat is sold separately



The Victoria Wall Hung | W/C Pan

345 x 574 x 310mm

Ceramic

Excluding TAX
£650

Please note the lavatory seat is sold separately

For a list of our Metal finishes please see page 90

Our Standard finishes include; Silver Nickel, Chrome Plate and Polished Brass.

Our Premium Finishes include; Aged, Brushed and Black Nickel Finishes.

Bespoke items must be paid in full prior to production. For full specifications and dimensions please email: Technical@catchpoleandrye.com

Bidets

Our bidets designs are carefully crafted and feature a beautifully rounded rim and a curved bowl for a simple yet sophisticated addition to your bathroom.

Conventional and classic in design, our bidets are ideal for those who favour bathroom suites with an understated touch.



The Empress | Bidet

360 x 560 x 455mm

Ceramic

Excluding TAX
£650

Please note the taps and fittings are sold separately.



The Victoria | Bidet

420 x 618 x 460mm

Ceramic

Excluding TAX
£650

Please note the taps and fittings are sold separately.

For a list of our Metal finishes please see page 90

Our Standard finishes include; Silver Nickel, Chrome Plate and Polished Brass.

Our Premium Finishes include; Aged, Brushed and Black Nickel Finishes.

Bespoke items must be paid in full prior to production. For full specifications and dimensions please email: Technical@catchpoleandrye.com

Lavatory Seats

With two style options available, each lavatory seat is handmade from solid wood in Kent, England, and built to last.

The round seat is based on a traditional design and so is suitable for most standard lavatory pans. In comparison, the Box Seat is more robust in size, perfect if you're looking for a seat that is durable and conventional.

Choose from a variety of solid timbers to enhance your bathroom design. We offer Ebonised Oak, Limed Oak, Mahogany, Standard Oak, Walnut – or the option for a classic Painted White.



The Box Seat | Lavatory Seat

490 x 590 x 130mm

All Wood Finishes

Excluding TAX

£750



The Round Seat | Lavatory Seat

390 x 577 x 71mm

All Wood Finishes

Excluding TAX

£700

A modified version of the Round Seat is available for close coupled W/C

If you are using a pan not purchased from us, please check your lavatory pan dimensions with our team to ensure compatibility.

For a list of our Metal finishes please see page 90

Our Standard finishes include; Silver Nickel, Chrome Plate and Polished Brass.

Our Premium Finishes include; Aged, Brushed and Black Nickel Finishes.

Bespoke items must be paid in full prior to production. For full specifications and dimensions please email: Technical@catchpoleandrye.com



The Throne and Thunderbox

The Throne Seat has the capacity to transform a room, thanks to its grand stature and intricate joinery. The luxury lavatory seat comes complete with regal armrests and a high back that can incorporate an integral cistern and lever.

With its expertly crafted joinery and neat finish, The Thunderbox Seat is an impressive lavatory seat that stands the test of time. The design is a true replica of a Victorian lavatory seat. Its high back features a concealed cistern with an incorporated lever, making it a popular choice for traditional bathrooms.



The Throne | Lavatory Seat & Cistern

Standard 838 x 569 x 1100mm All Wood Finishes *Excluding TAX* £4,500

This model is a freestanding unit designed to work with either a concealed or high level cistern

Please note that the W/C pan is sold separately on both versions.

Deluxe 838 x 569 x 1100mm All Wood Finishes *Excluding TAX* £5,000

This version of our Throne features a casing with an integral cistern and lever.

Please note that the W/C pan is sold separately on both versions.



The Thunderbox | Lavatory Seat

620 x 755 x 950mm All Wood Finishes *Excluding TAX* £3,000

Suitable only for use with W/C Pans supplied by Catchpole & Rye Limited. Includes integral cistern and lever.

For a list of our Metal finishes please see page 90

Our Standard finishes include; Silver Nickel, Chrome Plate and Polished Brass.

Our Premium Finishes include; Aged, Brushed and Black Nickel Finishes.

Bespoke items must be paid in full prior to production. For full specifications and dimensions please email: Technical@catchpoleandrye.com



Heated Towel Rails

Our heated towel rails are essential for both warmth and practicality. Available in a variety of brassware finishes, they can complement any bathroom style.

Made from 100% brass, our heated towel rails are suitable for central heating systems and can be supplied as dual fuel or electric only options.

The dual fuel versions are fitted with an electrical element that regulates heat output via an integral thermostat.

This ensures that the towel rail can be operated whilst the central heating is switched off allowing you to keep your towels warm, regardless of the time of year.

Electric only versions operate solely via an electrical element.



The Original Collection

Solid and sturdy, these heated towel rails bring practicality and warmth to any bathroom. The Original Towel Rail retains its traditional understated appearance, without compromising on modern day functionality.

Featuring the classic English ball jointed sections these rails are simple and stylish. This design has proven its popularity over the last 100 years and is an enduring favourite.



The Original Wall Mounted | Wall Mounted

			<i>Excluding TAX</i>
Standard	675 x 130 x 675mm	Standard Finishes	£1700
		Premium Finishes	£2040
Dual Fuel Electric	675 x 130 x 675mm	Standard Finishes	£2000
		Premium Finishes	£2340

*The Original Wall Mounted Towel Rail has a heating rating of 620 BTU
Please note radiator valves are NOT included in the price*



The Original Three Bar | Wall / Floor Mounted

			<i>Excluding TAX</i>
Standard	675 x 130 x 938mm	Standard Finishes	£1700
		Premium Finishes	£2040
Dual Fuel Electric	675 x 130 x 938mm	Standard Finishes	£2000
		Premium Finishes	£2340

*The Original Towel Rail has a heating rating of 620 BTU
Please note radiator valves are NOT included in the price*



The Original Ladder | Wall / Floor Mounted

			<i>Excluding TAX</i>
Standard	675 x 125 x 1650mm	Standard Finishes	£2400
		Premium Finishes	£2880
Dual Fuel Electric	675 x 125 x 1650mm	Standard Finishes	£2700
		Premium Finishes	£3180

*The Original Ladder Towel Rail has a heating rating of 1600 BTU
Please note radiator valves are NOT included in the price*

Our Standard finishes include; Silver Nickel, Chrome Plate and Polished Brass.

Our Premium Finishes include; Aged, Brushed and Black Nickel Finishes.

Bespoke items must be paid in full prior to production. For full specifications and dimensions please email: Technical@catchpoleandrye.com

The Original Collection Continued



The Original Arched Freestanding Standard	675 x 235 x 850mm	Standard Finishes	Excluding TAX
		Premium Finishes	£2,900
Dual Fuel Electric	675 x 235 x 850mm	Standard Finishes	£3,480
		Premium Finishes	£3,100

*The Original Arched Towel Rail has a heating rating of 1450 BTU
Please note radiator valves are NOT included in the price*



The Original Arched Ladder Freestanding Standard	675 x 275 x 1175mm	Standard Finishes	Excluding TAX
		Premium Finishes	£3,500
Dual Fuel Electric	675 x 275 x 1175mm	Standard Finishes	£4,200
		Premium Finishes	£3,800

*The Original Arched Ladder Towel Rail has a heating rating of 1550 BTU
Please note radiator valves are NOT included in the price*



The Original Cloakroom Radiator Wall / Floor Mounted Standard	500 x 250 x 940mm	Standard Finishes	Excluding TAX
		Premium Finishes	£2,100
Dual Fuel Electric	500 x 250 x 940mm	Standard Finishes	£2,520
		Premium Finishes	£2,400

*The Original Cloakroom Radiator has a heating rating of 1875 BTU
Please note radiator valves are NOT included in the price*



The Original Radiator Wall / Floor Mounted Standard	675 x 250 x 940mm	Standard Finishes	Excluding TAX
		Premium Finishes	£2,500
Dual Fuel Electric	675 x 250 x 940mm	Standard Finishes	£3,000
		Premium Finishes	£2,800

*The Original Radiator has a heating rating of 3500 BTU
Please note radiator valves are NOT included in the price*

*Our Standard finishes include; Silver Nickel, Chrome Plate and Polished Brass.
Our Premium Finishes include; Aged, Brushed and Black Nickel Finishes.*

Bespoke items must be paid in full prior to production. For full specifications and dimensions please email: Technical@catchpoleandrye.com

The Mercantile Collection

Our inspiration for this designer rail was an original Shanks of Barrhead version manufactured around 1890. It features unique cog shaped nuts that connect the transverse rails to the solid metal joints on the uprights.

This practical design concept allows us to manufacture these rails in Kent with a mixture of metals, most notably brass and copper. It also means we can easily customise the width of the rails.



The Mercantile Wall Mounted Wall Mounted			<i>Excluding TAX</i>
Standard	675 x 130 x 610mm	Standard Finishes	£2400
		Premium Finishes	£2880
Dual Fuel Electric	675 x 130 x 610mm	Standard Finishes	£2700
		Premium Finishes	£3180

*The Mercantile Wall Mounted Towel Rail has a heating rating of 630 BTU
Please note radiator valves are NOT included in the price*



The Mercantile Wall / Floor Mounted			<i>Excluding TAX</i>
Standard	675 x 130 x 940mm	Standard Finishes	£2400
		Premium Finishes	£2880
Dual Fuel Electric	675 x 130 x 940mm	Standard Finishes	£2700
		Premium Finishes	£3180

*The Mercantile Towel Rail has a heating rating of 630 BTU
Please note radiator valves are NOT included in the price*



The Mercantile Ladder Wall / Floor Mounted			<i>Excluding TAX</i>
Standard	675 x 130 x 1640mm	Standard Finishes	£2900
		Premium Finishes	£3480
Dual Fuel Electric	675 x 130 x 1640mm	Standard Finishes	£3200
		Premium Finishes	£3780

*The Mercantile Ladder Towel Rail has a heating rating of 1600 BTU
Please note radiator valves are NOT included in the price*

Our Standard finishes include; Silver Nickel, Chrome Plate and Polished Brass.

Our Premium Finishes include; Aged, Brushed and Black Nickel Finishes.

Bespoke items must be paid in full prior to production. For full specifications and dimensions please email: Technical@catchpoleandrye.com

The Mercantile Collection Continued



The Mercantile Arched | Freestanding
Standard 675 x 235 x 870mm

Standard Finishes
Premium Finishes

Excluding TAX

£3,600

£4,320

Dual Fuel | Electric 675 x 235 x 870mm

Standard Finishes
Premium Finishes

£3,900

£4,620

The Mercantile Arched Towel Rail has a heating rating of 1450 BTU Please note radiator valves are NOT included in the price



The Mercantile Arched Ladder | Freestanding
Standard 675 x 235 x 1175mm

Standard Finishes
Premium Finishes

Excluding TAX

£4,400

£5,280

Dual Fuel | Electric 675 x 235 x 1175mm

Standard Finishes
Premium Finishes

£4,700

£5,580

The Mercantile Arched Ladder Towel Rail has a heating rating of 2500 BTU Please note radiator valves are NOT included in the price



Radiator Valves
La Loire | The English

Standard Finishes
Premium Finishes

Excluding TAX

£450

£540

Our Standard finishes include; Silver Nickel, Chrome Plate and Polished Brass.

Our Premium Finishes include; Aged, Brushed and Black Nickel Finishes.

Bespoke items must be paid in full prior to production. For full specifications and dimensions please email: Technical@catchpoleandrye.com

Accessories

For descriptions on our metal finishes, please refer to the finishes guide in this brochure.

Toilet Accessories



The Empire Paper Holder	Standard Finishes	£200
	Premium Finishes	£240
The Empire Lavatory Brush	Standard Finishes	£260
	Premium Finishes	£312

Basin Accessories



The Empire Ceramic Cup	Standard Finishes	£180
	Premium Finishes	£216
The Empire Ceramic Soap Dish	Standard Finishes	£200
	Premium Finishes	£240
The Empire Wire Soap Basket	Standard Finishes	£150
	Premium Finishes	£180
The Empire Toothbrush Holder	Standard Finishes	£150
	Premium Finishes	£180

Shower Accessories



The Empire Wire Corner Basket	Standard Finishes	£240
	Premium Finishes	£288
The Empire Shower Tidy	Standard Finishes	£300
	Premium Finishes	£360

Bath Accessories



The Empire Bath Rack	Standard Finishes	£400
	Premium Finishes	£480



Hooks & Rails



The Empire Robe Hook	Standard Finishes	£150
	Premium Finishes	£180
The Empire Towel Ring	Standard Finishes	£150
	Premium Finishes	£180
The Empire Towel Rail	Standard Finishes	£200
	Premium Finishes	£240
The Empire Double Towel Rail	Standard Finishes	£300
	Premium Finishes	£360

Shelves



The Empire Glass Gallery Shelf	Standard Finishes	£300
	Premium Finishes	£360

Mirror



The Empire Mirror	Painted	£1,500
The Empire Mirror	Polished	£2,300

Our Standard finishes include; Silver Nickel, Chrome Plate and Polished Brass.

Our Premium Finishes include; Aged, Brushed and Black Nickel Finishes.

Bespoke items must be paid in full prior to production. For full specifications and dimensions please email: Technical@catchpoleandrye.com



Fittings

For descriptions on our metal finishes, please refer to the finishes guide in this brochure.



Lavatory Fittings

		<i>Excluding TAX</i>
Low Level Flush Pipe	Standard Finishes	£300
High Level Flush Pipe Ensemble	Standard Finishes	£600
Low Level Ceramic Lever	Standard Finishes	£200
Ceramic Pull and Chain	Standard Finishes	£150
Concealed Cistern	One Finish	£250
<i>For our Premium Aged, Brushed and Black Nickel Finishes, please add an additional 20% plus VAT.</i>		



Basin Fittings

		<i>Excluding TAX</i>
Bottle Trap	Standard Finishes	£200
Ornate Brackets (can also be used on cisterns)	Standard Finishes	£250
<i>For our Premium Aged, Brushed and Black Nickel Finishes, please add an additional 20% plus VAT.</i>		



Shower Fittings

		<i>Excluding TAX</i>
Oval/Round Wall Mounted Shower Rail	Standard Finishes	£1,000
Oval/Round Ceiling Mounted Shower Rail	Standard Finishes	£1,000
<i>For our Premium Aged, Brushed and Black Nickel Finishes, please add an additional 20% plus VAT.</i>		



Bath Fittings

		<i>Excluding TAX</i>
Exposed Trap and Outlet	Standard Finishes	£400
<i>For our Premium Aged, Brushed and Black Nickel Finishes, please add an additional 20% plus VAT.</i>		



Wastes

		<i>Excluding TAX</i>
Butler Sink Waste, Plug and Chain	Standard Finishes	£200
Push Down Basin Waste	Standard Finishes	£150
Shower Waste	Standard Finishes	£200

For our Premium Aged, Brushed and Black Nickel Finishes, please add an additional 20% plus VAT.

Our Standard finishes include; Silver Nickel, Chrome Plate and Polished Brass.

Our Premium Finishes include; Aged, Brushed and Black Nickel Finishes.

Bespoke items must be paid in full prior to production. For full specifications and dimensions please email: Technical@catchpoleandrye.com

Plaques & Emblems

All of our Bathtubs and Cisterns can be customised with the addition of our signature emblems or a bespoke one of your own design. We also offer three different plaque designs to choose from for our Nickel, Copper and Brass Bateau.

Bespoke Cisterns

The Deluge cistern can be customised with a bespoke finish or house name, date or any wording you wish. The price for this type of customisation is a one off fee of £900 plus VAT for one or more cisterns. For complex designs, such as logos or emblems the process is longer and will be assessed on the complexity of the design. All customised cisterns will involve longer lead times and require approval before casting.



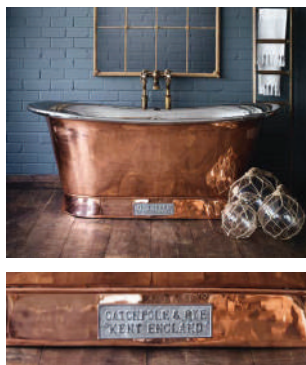
Plaques

We offer three bath plaque options, the Standard, which matches the exterior of your bath. The Contrast, which matches the interior of your bath (except when the interior is enamel) and the Highlighted plaque, that shows the lettering emphasised, normally in the same finish as the interior. Alternatively, you can simply choose not to have a plaque. Please specify at the time of ordering. Bespoke plaques with your own design or wording can also be produced for an extra cost. Please contact us about your requirements.

Standard Plaque



Contrast Plaque



Highlighted Plaque



Emblems

We offer two standard bath emblems, the C&R Wheatshaeaf and Venetian Crest. Both emblems can be cast or mounted onto your bath. The additional cost is £1000 plus VAT.

The C&R Wheatshaeaf



The Grand (Cast Metal Bathtub)



The Nickel Bateau

The Venetian Crest



The Niederbronn (Cast Metal Bathtub)



The Brass Bateau

Emblems

Bathtubs can be customised to your own specification, allowing you to personalise a bath with a coat of arms, bespoke logo, initials or emblem. Please contact us to discuss your requirements.



Important

Most cast-iron baths are cast with a small Catchpole and Rye Wheatshaeaf logo as standard on either side. If you would prefer the bath be cast without these, please let us know prior to ordering.



Metal Bathtubs

All of our Cast Metal bathtubs come with enameled interiors, and have the choice of polished or painted exteriors. Our Copper, Nickel and Brass Bateau can also have an enameled interior if desired. However, we also offer a metallic interior of Polished Nickel or the polished base metal the bath is made from, this is either Brass or Copper.

Cast Metal



Polished

Our most requested finish, it takes up to a week of hard work to hand polish and buff the exterior of a cast-iron bath to give it an amazing mirror like finish. The end result is truly spectacular and definitely the focal point in any bathroom. All polished baths are sealed with a clear lacquer.



Painted

Painting the exterior of your bath in a colour of your choice can help compliment an overall design scheme. We recommend paint from the Farrow & Ball range, but can match any colour. The painted exterior is also available on our Nickel, Copper and Brass Bathtubs. Please specify the paint colour before ordering.



Charcoal

Our Charcoal finish is an exclusive painted creation, with a consistent chalky matt appearance. It offers a striking contrast to the interior finish of any bathtub. Its painted exterior is also available on our Nickel, Copper and Brass Bathtubs.

Nickel



Polished Nickel

The original classic Nickel Bateau is a firm favourite. The silver sheen both inside and out provides a real wow factor to any bathroom.



Brushed Nickel

Brushed Nickel has a dull silver appearance, which has been abraded by hand and sealed with a lacquer. Brushed Nickel provides a perfect contrast to the lustrous silver interior.



Antique Nickel

Antique Nickel is a consistent finish like Brushed Nickel but with a much darker pewter-like tone.

Copper & Brass



Polished Copper

Our true original finish, this bath is made entirely of copper and is highly polished both inside and out for a gleaming finish.



Brushed Copper

With an understated sheen, the brushed copper finish has an even matt appearance.



Antique Copper

The Antique Copper finish shares the same matt quality effect as brushed copper, but with a deeper more leathery tone.



Weathered Copper

Weathered Copper simulates an organic aging process on the exterior of the bath with variations of dark and light copper tones. Weathered finishes may vary in tones/shades.



Verdigris

Verdigris is a bluish-green encrustation or patina that is naturally formed on a copper base by atmospheric oxidation. Here the process has been perfectly recreated in our workshops.



Polished Brass

The true original, this radiantly lustrous bath is made entirely of brass and polished both inside and out for a gleaming finish.



Brushed Brass

This elegant finish has a very pale matt gold appearance, offering a smart, sophisticated look.



Antique Brass

With an even brushed effect throughout, the antique brass finish has a dark brass tone resembling aged bronze.



Weathered Brass

Mimicking brass that has aged and patinated over time, this multi-tonal brass finish has a matt bronze-like quality. Weathered finishes may vary in tones/shades.

Note: Exterior and Interior finishes on all baths are completely sealed with a unique lacquer and are impervious, unless otherwise requested.

Metal Cisterns

Our metal cisterns come in a variety of metal finishes, which have each been described below. The flushpipe and fittings are available in any of our brassware finishes seen on the following page. Physical samples can be ordered from our sales team, or viewed in our Kent and London showrooms.

Painted Cisterns



Charcoal

Our charcoal finish is an exclusive creation, which provides a consistent chalky matt appearance. It offers a bold contrast against flush pipe finishes.



Painted

We use paint from the Farrow and Ball range or The Little Green Paint Company, but can match to any colour required. Please note: specialist paint finishes may incur an extra charge.

Nickel Cisterns



Silver Nickel

The cistern is first polished to a high shine, it is then plated and finally buffed to give it its lustrous, silver-like quality.



Brushed Nickel

Brushed Nickel has a dull silver appearance, which has been abraded by hand and sealed with a lacquer.



Antique Nickel

Antique Nickel is a consistent finish like Brushed Nickel but with a much darker pewter-like tone.

Copper & Brass Cisterns



Polished Copper

Plated in copper, this cistern is highly polished to a gleaming finish.



Brushed Copper

All the beauty of copper without the lustrous sheen, this brushed copper effect has an even matt appearance.



Antique Copper

The Antique Copper finish shares the same matt quality effect as brushed copper, but with a much deeper leathery tone.



Weathered Copper

Weathered Copper simulates an organic aging process on the exterior of the cistern with variations of dark and light copper tones. Weathered finishes may vary in tones/shades.



Verdigris

Verdigris is a bluish-green encrustation or patina that is naturally formed on a copper base by atmospheric oxidation. Here the process has been perfectly recreated in our workshop.



Polished Brass

Gleaming gold, the brass is hand buffed to a high sheen and lacquered to keep its gold-like appearance.



Brushed Brass

This elegant finish has a very pale matt gold appearance, offering a smart, sophisticated look.



Antique Brass

With an even brushed effect throughout, the antique brass finish has a dark brass tone resembling aged bronze.



Weathered Brass

Mimicking brass that has aged and patinated over time, this multi-tonal brass finish has a matt bronze-like quality. Weathered finishes may vary in tones/shades.

Brassware Finishes

All of our products are made from solid brass can be plated in a number of different metal finishes.

These include; Taps & Faucets, Showers, Heated Towel Rails, Cistern Fittings, Basin Frames and all of our Accessories.



Silver Nickel

A versatile finish that will match with most finishes



Brushed Nickel | Premium

Brushed metals this versatile matt finish blends into most bathroom settings.



Black Nickel | Premium

Best coupled with any silver toned finish. This pewter-like finish is the perfect contemporary twist to any bathroom.



Polished Brass

Works well paired with polished brass, copper or any other polished finishes. Please note this finish comes unlacquered.



Brushed Brass | Premium

Modern and matt, this golden finish suits most colour palette and styles.



Aged Brass | Premium

Versatile when coupled with matt or brushed finishes. This also works well with any copper or brass pairings.



Chrome

Traditional and hard-wearing, chrome is best combined with a polished cistern or to suite in with a chrome bathroom.



Brushed Chrome | Premium

A good alternative to polished chrome, this brushed version is equally striking and can be used in modern and traditional spaces.

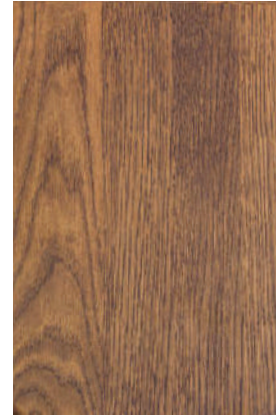


Aged Copper | Premium

Owing to its rich russet colour, this finish works well with darker toned rooms with antique flair or with bold colour choices.

Wood

Manufactured in Kent from high quality sustainable timbers, our vanity units and toilet seats come in a number of wooden finishes. We can also paint our seats and vanity units in any colour of choice, however specialist paints may incur additional charges.



Natural Oak

Note: Solid wood is a natural material and as such may be subject to variation in colour and shades.



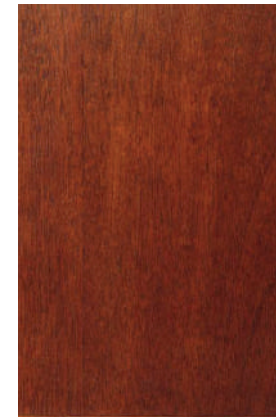
Limed Oak

Note: Solid wood is a natural material and as such may be subject to variation in colour and shades.



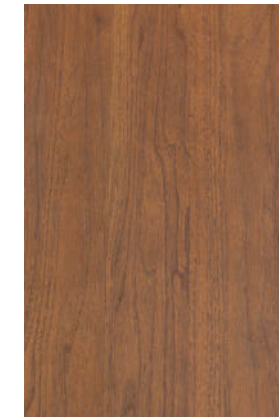
Ebonised Oak

Note: Solid wood is a natural material and as such may be subject to variation in colour and shades.



Mahogany

Note: Solid wood is a natural material and as such may be subject to variation in colour and shades.



Walnut

Note: Solid wood is a natural material and as such may be subject to variation in colour and shades.



Painted

Note: Solid wood is a natural material and as such may be subject to variation in colour and shades.



Marbles and Natural Stone

We offer five marble and stone options for all of our washstands and vanity units:

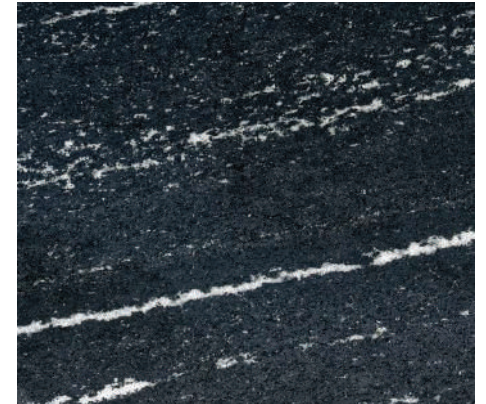
Portoro, Natural Slate, Nero Granito, Arabescato and Verde.

Marble and stone can also be requested in a honed finish, which gives a matt appearance.



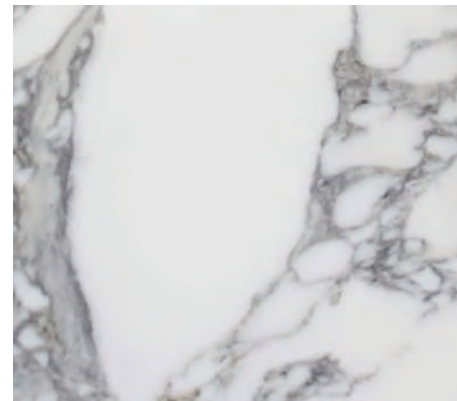
Portoro

A classic Italian marble, this rich and sumptuous brown/black marble has veins and flecks of cream and gold.



Nero Granito

A rich black granite with white veins and speckling running throughout.



Arabescato

Carrera Arabescato is the classic Italian marble, its white base contrasted with clean grey veining provides an elegant and timeless feel.



Verde

Our newest addition to the range, this striking marble with varying flecks of green pairs beautifully against our aged metal finishes.

Marble and Stone are natural products and as such may be subject to variations in colour and shades.

All Products with bespoke marble must be paid for in full before production commences.

Important Information

Cast Iron

The weight of a cast iron bath ranges from 150 kilos to 250 kilos.

It is imperative that the floor is capable of supporting this weight. If you have any doubt, please consult a qualified professional before installing the bath. It requires 3-4 strong individuals to move a cast iron bath.

Overflows, Wastes and Taps

These are sold as separate items unless otherwise stated.

Installation

All our baths, showers and sanitary ware should be fitted by a qualified installer. If you or your installer have any technical queries we would be happy to give advice and assistance. Technical information and specifications are also available online at www.catchpoleandrye.com or call 01233 840840 for further assistance.

Note: Please ensure there is adequate pressure to operate the products you have selected.

UK Delivery

Catchpole & Rye Limited offer a nationwide delivery service and operate a scale of modest charges. Alternatively, stock can be collected from our warehouses in Kent. All orders are double checked, wrapped in appropriate packaging and dispatched in good condition. Once you have checked your order, please sign the delivery docket. Replacements for damaged or incorrect items can only be undertaken if reported within three days of delivery.

Whilst every effort is made to ensure satisfactory delivery of customer orders, we cannot accept liability for any damage caused to property in pursuance of specific requests for goods to be unloaded. Equally, we do not accept responsibility for lost working time in the unlikely event of a delivery being incorrect, delayed or postponed.

International Sales and Delivery

Catchpole & Rye can arrange worldwide delivery. Details of charges will be confirmed in advance or at the time of quotation. Please note that unless otherwise agreed we are not responsible for any import duties, taxes or brokerage fees that may be incurred in the recipient country.

For customers outside the UK, please call +44 020 7351 0940 or email info@catchpoleandrye.com.

Lead Times

Many standard items are kept in stock and can be delivered quite quickly. Lead times will be clarified in detail at the time of ordering.

Lead times for bespoke or dedicated items will vary.

Payment

We accept all major credit cards and debit cards. Payments can be made via BACS transfer, phone or in store. The buyer is required to pay a 50% deposit when placing the order, with the balance due once delivery commences or upon completion. Bespoke orders must be paid for in full when the order is placed.

Copyright & Data Protection

The information contained within this document is to the best of our knowledge and accurate at the time of going to press. We do however reserve the right to introduce changes and modifications required over the course of time. We reserve the right to take legal action against breach of copyright laws. Images may not be reproduced without express written permission. All product design, specifications, logos, content and images contained within the product guide are the intellectual property and copyright of Catchpole & Rye Limited.

We would like to keep your personal information on file so that we can keep you informed about Catchpole & Rye. These details will not be passed on to any other company. For full details of our privacy policy, please visit Catchpoleandrye.com.

Showrooms

Catchpole and Rye Limited have showrooms located in London and the South East. You will find our full collection of luxury bath and sanitary ware displayed in each of our showrooms. To visit us, or make an appointment, please contact one of our expert friendly sales team, who will be happy to assist.

Catchpole and Rye also offer a full bathroom design service and site visit if required.







London Showroom

Situated in the London Borough of Chelsea and Kensington, Catchpole and Rye's London Showroom is ideally located just a ten minute walk from the Piccadilly, District or Circle Lines. Fulham Road runs adjacent to the famous Kings Road making it an ideal destination for designers and residential clients.

Parking: There are pay and display parking spaces on Redcliffe Place SW10 9EW. LCP car park at Edith Grove SW10 0ED.

There is also a 20 minute loading bay adjacent on Fulham Road between 10.00am and 4.00pm.

Nearest Stations:

Fulham Broadway (0.5 miles) 
Earls Court (0.6 miles) 
West Brompton (0.5 miles) 
Imperial Wharf (0.6 miles) 

282 -284 Fulham Road,
Chelsea, London,
SW10 9EW

020 7351 0940
info@catchpoleandrye.com

Kent Showroom & Workshops

By Train: If you intend visiting by train we can collect you from either Pluckley Station or Ashford International. Please call in advance to arrange. Trains for Pluckley depart from Charing Cross and London Bridge and take approx 1 hour and 10 minutes. The High Speed Rail Link from St Pancras to Ashford International takes approx 37minutes.

By Car: From M20 Exit the M20 at junction 9 for Ashford. Follow signs for the A20 towards Lenham and Charing. Stay on this road for about two miles until you see signs for Hothfield and Little Chart on your left. Turn left at sign which takes you into the village of Hothfield. When you get to the village sign, turn left into road - The Street. Stay on this road for around 2 miles and you will find us on the right hand side. (Catchpole & Rye sign on road)

If Travelling from the A28: Leave the A28 in Bethersden towards Pluckley. Follow the road for around three miles. Turn right around 500 yards after the Railway Bridge at Pluckley Station. Turn right into Pluckley Road and you will approach Catchpole and Rye on your left. Parking: There is onsite parking provided.

Saracens Dairy,
Pluckley Road, Pluckley,
Ashford, Kent
TN27 OSA.

01233 840 840
info@catchpoleandrye.com



Thank you for viewing our brochure
Time for Tea!