

PRODUCT SPECIFICATION

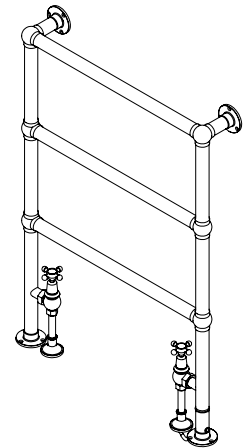
The Original Three Bar Towel Rail

STANDARD MODEL

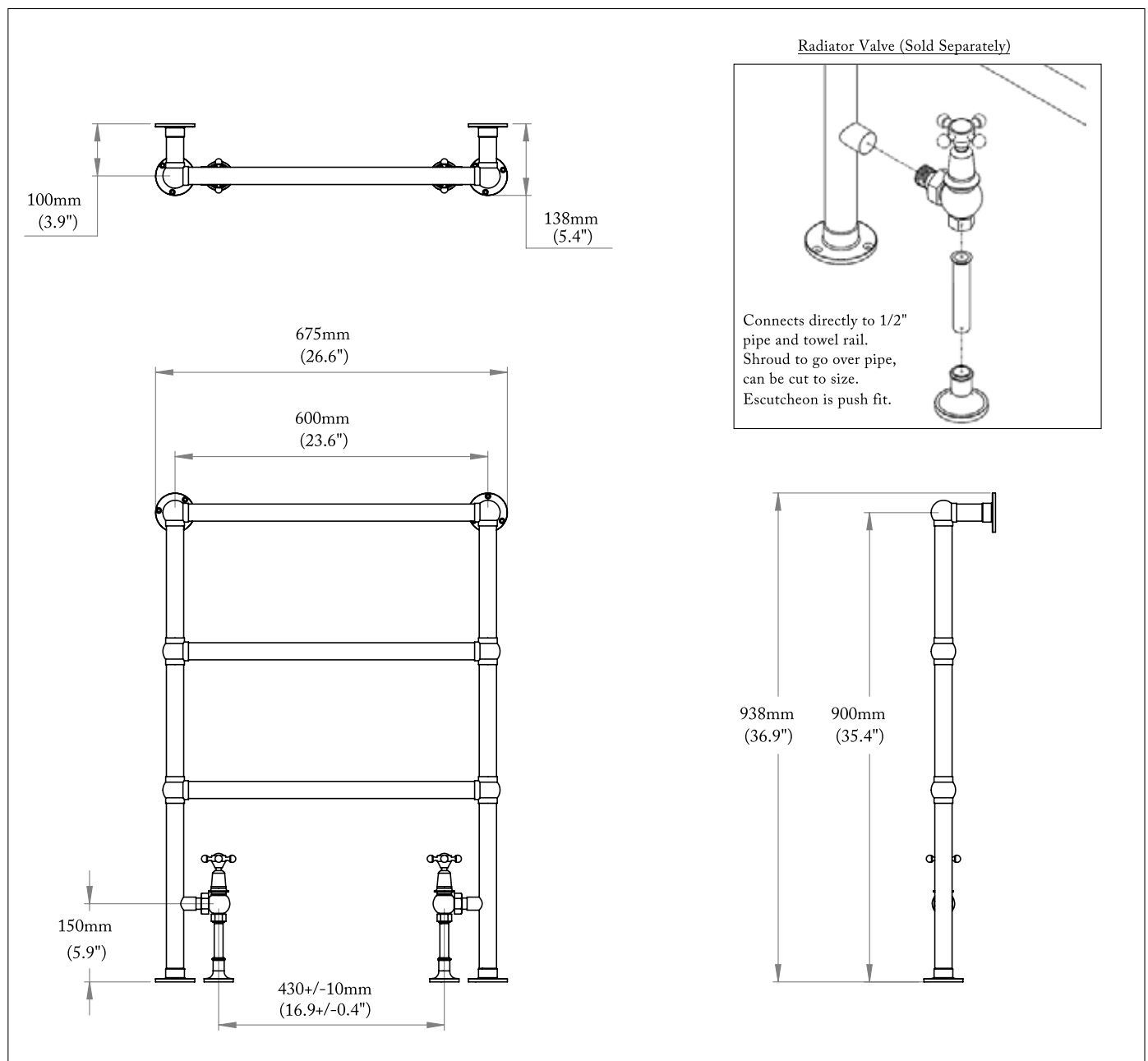
BTU OUTPUT @50°C: 641

BTU OUTPUT @60°C: 812

Manufactured in the UK from BSC2126 Brass Tube.



STANDARD MODEL



PLEASE NOTE: Whilst every effort is made to ensure the accuracy of these specification sheets, they are subject to change without notice as part of the company's ongoing product development process.



PHONE: +44 1233 840 840
EMAIL: INFO@CATCHPOLEANDRYE.COM
ADDRESS: CATCHPOLE & RYE, SARACENS DIARY, ASHFORD, KENT, TN27 0SA

©COPYRIGHT 2021 CATCHPOLE & RYE.
ALL RIGHTS RESERVED.

WWW.CATCHPOLEANDRYE.COM